

Memo

To: Mayor and Council
cc: Department Heads
From: Pat MacQueen, City Manager
Date: March 5, 2012
Re: Manager's Report

I&I Work Accomplished

Attached is a map showing the I&I work that was able to be completed in February by Nelson Construction. They were able to install 110 feet of new pipe in the wetlands area owned by Barry Kelley east of Riverside Drive. This provides a good start to this I&I project for completion this year.

Fiber Cable Project

As part of an overall project to provide better access to broadband throughout the State, will be installing new fiber optic cable in a south/north direction up through the City of Berlin. This will not only provide better access to broadband for the citizens in Berlin, but will also get our current fire alarm lines in the path of the new fiber optic cable (which are badly in need of replacement) replaced with new fire alarm lines. This work will be carried out by a company called Wave Guide which has been contracted by New Hampshire Optical Systems (NHOS) to design and build "Network New Hampshire Now". This will be a fiber optic cable network throughout the state. NHOS is working in partnership with the University System of New Hampshire as part of a Federal Broadband Technology Opportunities Program grant. A plan showing the route of the cable is attached.

FEMA Floodplain Mapping

FEMA has provided the City with preliminary copies of their revised base flood elevations for Berlin. They have redone the maps which were last revised in 1982. The new maps are easier to review and we will be able to add them to our GIS system once they are finalized. FEMA sent along a list of the changes for communities along the Androscoggin and the list at first seemed as though there weren't many changes for Berlin. Upon further review and consultation, it seems as though there will be several changes along the river and many homeowners who were previously outside the floodplain will now be included in areas prone to flooding forcing them to acquire flood insurance.

Speaking with the Office of Energy and Planning (OEP), City Planner, Pam Laflamme was able to get them to help identify the areas that will be affected as their maps do not show the changes clearly. They have also agreed to help begin the public outreach earlier than planned in order to reach out to homeowners who will be affected by the changes. FEMA will hold a public meeting at some point during the process, but if a homeowner is unaware of the change, they would not know they should show up at the meeting. We are hoping that OEP is able to help us identify all those property owners early in this process. Once it is clear where the changes are, we will add this information to our website for citizens to review and send us comments.

Isaacson Auction

ISSI has been auctioned off by the bankruptcy court to the highest bidder Myron Bowling Auctioneers along with Counsel R.B. Capital and Hilco Industrial. This of course appears to be a big step backward in the midst of several steps forward that the area has achieved. However, at this point no one really knows what is going to happen in any detail with the Isaacson assets. It is expected that there will be the loss of many badly needed jobs, but it clearly still has a way to go to play out.

Maynesboro Stud Farm Memorial Ride

I have attached a solicitation from the Berlin and Coos County Historical Society regarding the planned 100th anniversary celebration of the establishment of the Maynesboro Stud Farm in 1912 by William Robinson Brown. This was apparently the historic beginning of the breeding of Arabian horses in this country. To celebrate this, the Berlin and Coos County Historical Society has planned this 100th anniversary celebration for September 15, 2012, with several endurance horse rides in Berlin. They are asking for donations to help them achieve their goal of \$10,000 to fund this historic event.

Legislative Issues

HB 1223 The Legislature will return from its break this week. The House will vote on HB 1223 relative to remedies under the Right-to Know Law. Apparently the Judiciary Committee approved an amendment which provides that if a court finds that an employee or the elected body itself knowingly violated RSA 91-A:12-a or any other provision of RSA 91-A in bad faith that the court "shall" order that such officer, employee, or other official of a public body or public agency be removed from their position or positions within the public body or agency.

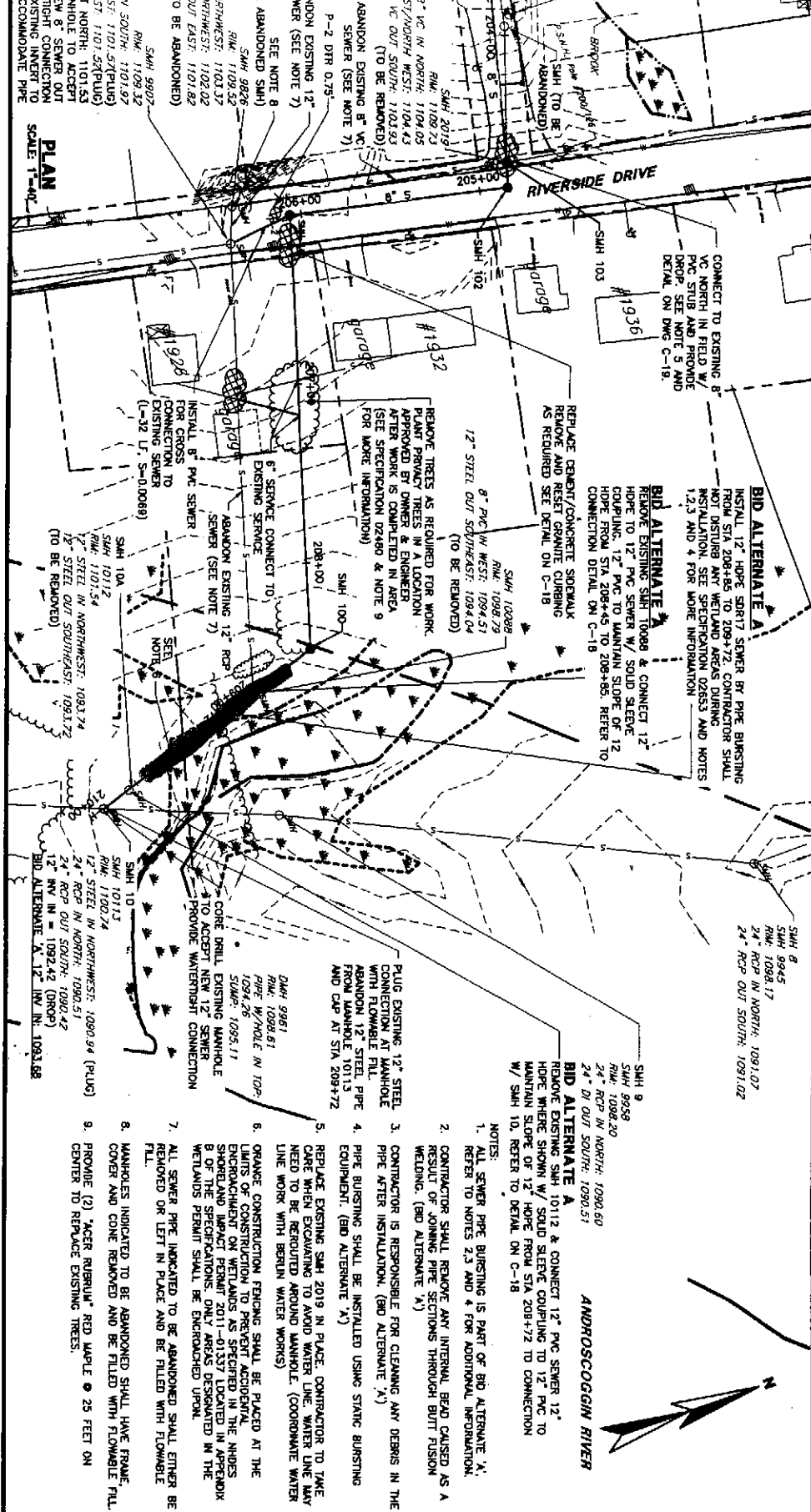
It seems that the court could certainly remove an employee from their positions. However, it is the courts that have in the past determined that public employees have a constitutional "due process" right to their positions and therefore can't be removed without due process or in violation of labor agreements.

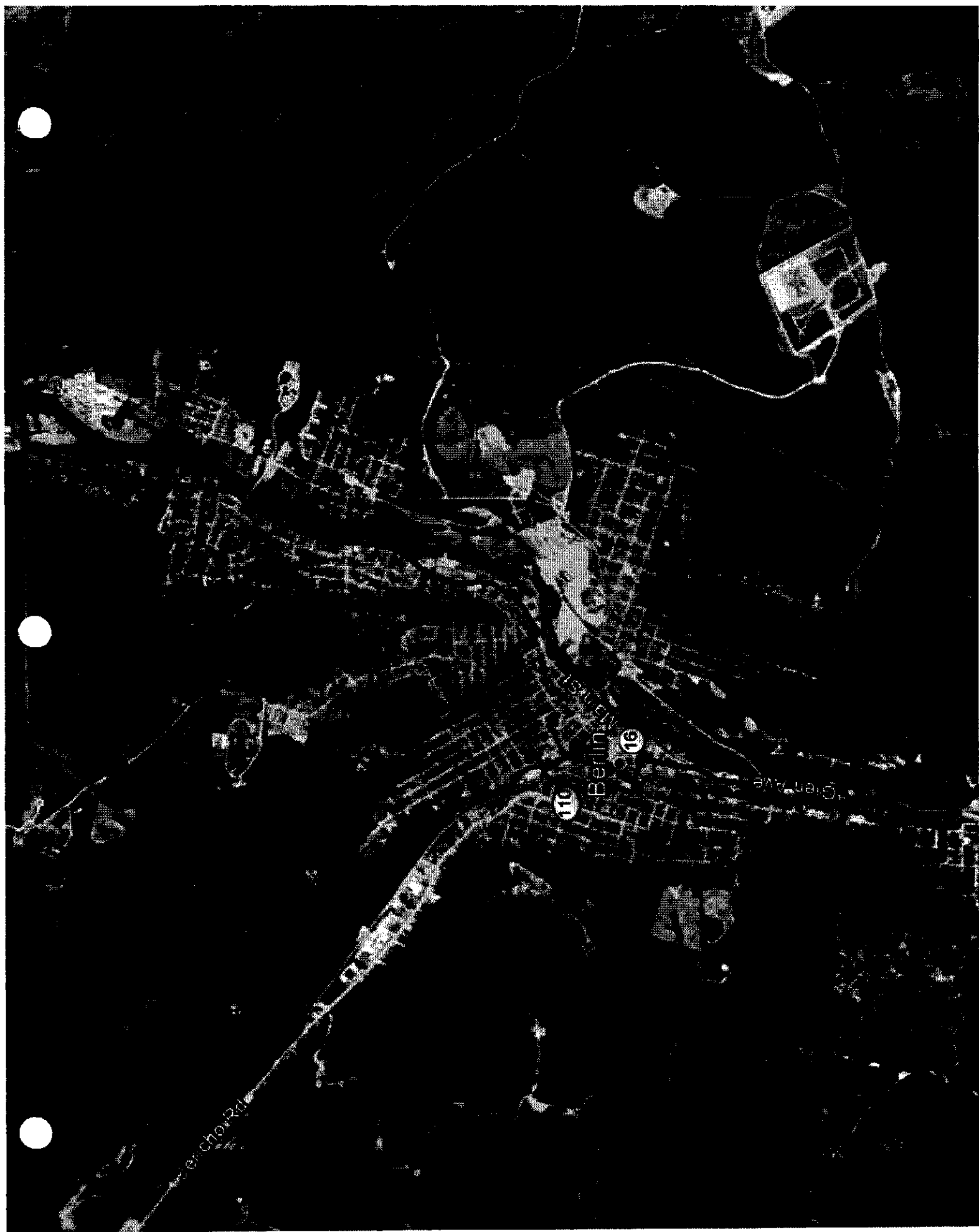
It also seems pretty extreme that a court could remove an entire City Council from their elected positions if it found that such a body had violated RSA 91-A in bad faith.

Manager's Timekeeping

Attached.

Plotter in February







The Moffett House

Berlin & Coos County Historical Society

RE: Maynesboro Stud Farm Memorial Ride

In 1912 William Robinson Brown founded the Maynesboro Stud Farm in Berlin, New Hampshire. This was an historic beginning in the breeding of **Arabian horses**. Over the next 20 plus years, WR Brown had established his **Maynesboro Stud** as the most important Arabian breeding farm in the United States. He imported 33 horses from England, France and Egypt and bred 194 Arabians. The Maynesboro Stud bloodline is well known today and continues to produce Champion Arabian horses.

From 1919 to 1923 WR Brown co-sponsored the US Remount endurance ride to prove that the Arabian would be the best horse for the US Cavalry. One 300 mile ride was held in each of the five years. Brown's Maynesboro Stud Arabians won the event three times and established the Arabian breed as the preferred horse for long distance rides, even to this day.

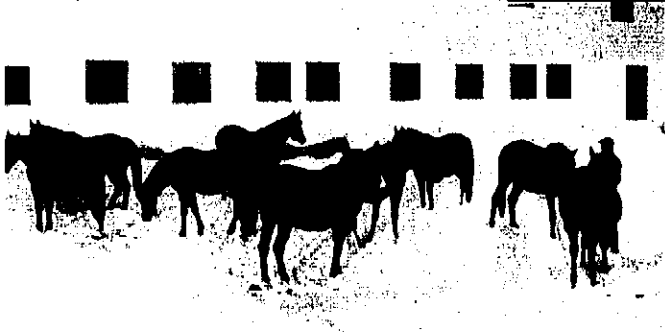
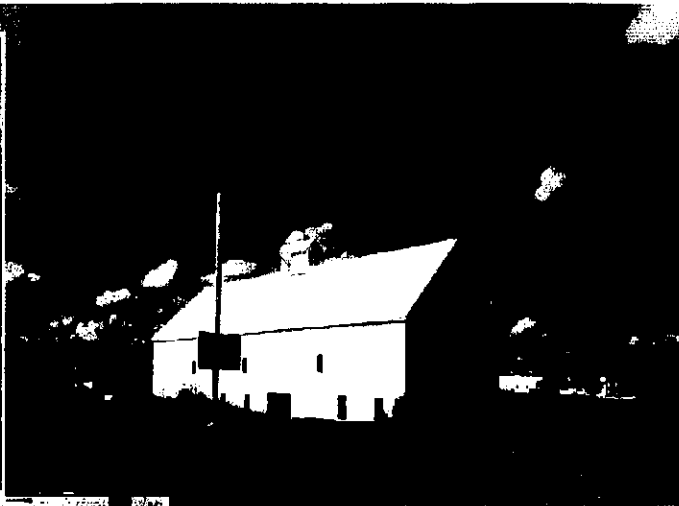
On September 15, 2012 the Berlin & Coos County Historical Society (BCCHS) will celebrate the 100th anniversary of the establishment of the Maynesboro Stud and its founder WR Brown with an endurance horse ride beginning and ending at the Maynesboro Stud Barn which has been restored by BCCHS over the past ten years. There will be a 50 mile ride, a 25 mile ride and a 10 mile recreational ride taking place through the streets of Berlin, Cates Hill and the Jericho Lake ATV Park. BCCHS will also teach a history lesson at Berlin High School about Brown Company, WR Brown's Arabians and will have this history displayed in an exhibition at St. Kieran Arts Center.

BCCHS has raised \$4500 toward its goal of \$10,000 to fund this historic event and is asking the community to contribute toward the success of this endurance ride and as an exciting celebration of our history and heritage. It has been almost 80 years since the citizens of Berlin saw these beautiful animals in this great city and this ride will offer that opportunity again.

Would you consider making an investment donation today to help make this historic event a reality in our community?

Walter Nadeau

Vice-President, Berlin & Coos County Historical Society



ARABIAN AT MAYNESBORO IN WINTER.



MARES AT MAYNESBORO.

Maynesboro Stud Barn

The Berlin & Coos County Historical (BCCHS) is requesting your assistance with the **Maynesboro Stud Memorial Ride** by choosing one of the following sponsorship levels:

Ride Sponsorship: \$25 to \$99 – credit will be given for this level with your name appearing in the event program.

“Hold” Sponsorship: \$100 to \$299 – during a 50 mile endurance ride there must be three “holds.” These are locations throughout the ride where the horses are checked by a veterinarian to determine if the horse can continue on with the ride. The two holds will be at Bisson's farm on Cates Hill and one at Berlin Senior High School. Credit will be given at this level with your name or business in the program and clearly visible at each hold.

Maynesboro Stud Sponsorship: \$300 to \$499 - your large banners provided by you or your business, will be displayed on the Maynesboro Stud barn. This site is where the riders will be camped out, where they will have two meals and where the ride begins and ends. Your name or business will also be in the event program.

WR Brown Circle: \$500+ - A large banner indicating your level of sponsorship will be hung on the large barn, your name clearly visible at hold areas and your name in the event program.

Please submit by April 15, 2012.

2012 Hours Calendar

Week Ending

Week Ending

Week E

Week Ending

Week Ending

Week Ending

1

1/7

2/25

17

26

36

45

2

1/14

9

18

27

37

46

3

1/21

10

19

28

38

47

4

1/28

11

20

29

39

48

5

2/4

12

21

30

40

49

6

2/11

13

22

31

41

50

7

2/18

14

23

32

42

51

Excess Hours Worked
as of 1/31/11 — 277.16

Hours — reporting period 431.00
Avg hrs/wk 47.89
Contracted Hours 360.00
Excess Hours Worked 71.00
Total Excess Hours Worked 348.16

M 9

S 3.75

4/28

6/30

9/8

11/10

S 3

S 1

5/5

7/7

9/15

11/17

M 11.5

M 10

5/12

7/14

9/22

11/24

T 10.25

T 11.5

5/19

7/21

9/29

12/1

T 10.25

T 11.5

5/26

7/28

10/6

12/8

T 9

T 8

6/2

8/4

10/13

12/15

T 8

T 8

6/9

8/11

10/20

12/22

Excess Hours Worked
as of 1/31/11 — 277.16

Hours — reporting period 431.00
Avg hrs/wk 47.89
Contracted Hours 360.00
Excess Hours Worked 71.00
Total Excess Hours Worked 348.16

T 8.75

M 9.25

4/28

6/30

9/8

11/10

T 10.25

T 10.25

5/5

7/7

9/15

11/17

T 10.25

T 11.5

5/12

7/14

9/22

11/24

T 10.25

T 11.5

5/19

7/21

9/29

12/1

T 10.25

T 11.5

5/26

7/28

10/6

12/8

T 9

T 8

6/2

8/4

10/13

12/15

T 8

T 8

6/9

8/11

10/20

12/22

Excess Hours Worked
as of 1/31/11 — 277.16

Hours — reporting period 431.00
Avg hrs/wk 47.89
Contracted Hours 360.00
Excess Hours Worked 71.00
Total Excess Hours Worked 348.16

W 10.25

W 10.25

4/28

6/30

9/8

11/10

W 10.25

W 10.25

5/5

7/7

9/15

11/17

W 10.25

W 11.5

5/12

7/14

9/22

11/24

W 10.25

W 11.5

5/19

7/21

9/29

12/1

W 10.25

W 11.5

5/26

7/28

10/6

12/8

W 8.5

W 8

6/2

8/4

10/13

12/15

W 8

W 8

6/9

8/11

10/20

12/22

Excess Hours Worked
as of 1/31/11 — 277.16

Hours — reporting period 431.00
Avg hrs/wk 47.89
Contracted Hours 360.00
Excess Hours Worked 71.00
Total Excess Hours Worked 348.16

F 4

F 5

4/28

6/30

9/8

11/10

F 4

F 5

5/5

7/7

9/15

11/17

F 3.5

F 8

5/12

7/14

9/22

11/24

F 3

F 5

5/19

7/21

9/29

12/1

F 4.5

F 6

5/26

7/28

10/6

12/8

F 6

F 13.00

6/2

8/4

10/13

12/15

F 8

F 8

6/9

8/11

10/20

12/22

Excess Hours Worked
as of 1/31/11 — 277.16

Hours — reporting period 431.00
Avg hrs/wk 47.89
Contracted Hours 360.00
Excess Hours Worked 71.00
Total Excess Hours Worked 348.16

S 4

S 7

4/28

6/30

9/8

11/10

S 4

S 7

5/5

7/7

9/15

11/17

S 1.5

S 3

5/12

7/14

9/22

11/24

S 0.75

S 10

5/19

7/21

9/29

12/1

S 10.75

S 11.5

5/26

7/28

10/6

12/8

S 10.75

S 11

6/2

8/4

10/13

12/15

S 8.5

S 8.5

6/9

8/11

10/20

12/22

Excess Hours Worked
as of 1/31/11 — 277.16

Hours — reporting period 431.00
Avg hrs/wk 47.89
Contracted Hours 360.00
Excess Hours Worked 71.00
Total Excess Hours Worked 348.16

M 8.75

M 9.25

4/28

6/30

9/8

11/10

M 11.5

M 10

5/5

7/7

9/15

11/17

M 10.25

M 11.5

5/12

7/14

9/22