

Berlin Multi-Use Riverwalk Trail

Local Concerns Meeting
June 5, 2018

Jay J. Poulin, PE
President / Lead Civil Engineer
HEB Engineers, Inc.

Jeff Hyland, PLA, ASLA
Landscape Architect
Ironwood Design Group, LLC



Engineering for your future

Introductions



Jay J. Poulin, PE
Project Manager
HEB Engineers, Inc.



Jeff Hyland, PLA, ASLA
Landscape Architect
Ironwood Design Group, LLC



Engineering for your future

How did we get here?

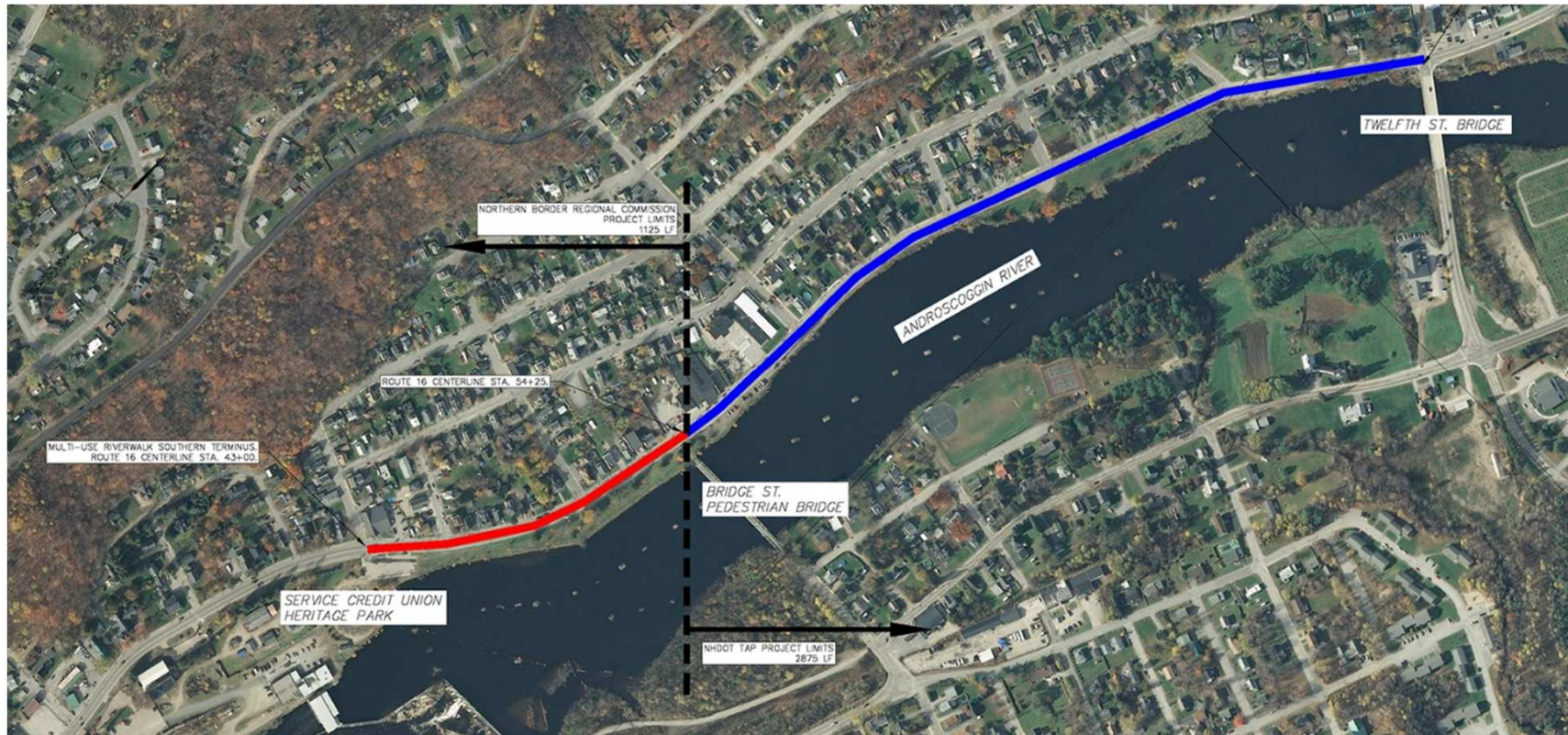
- Riverwalk masterplan created – 1996 CRJA
- City submitted applications for grants from NHDOT Transportation Alternatives Program (TAP) and Northern Borders Regional Commission (NBRC) - 2016
- City awarded grants from TAP and NBRC – 2017
 - TAP Grant - \$860,000
 - NBRC Grant - \$250,000
 - Total Available Funding - \$1.1 Million
- Route 16 Roadway Reconstruction – 2016-2018
 - Riverwalk incorporated into planning and design of roadway improvements.

Project Goals

- Develop multi-use/multi-modal Riverwalk along the Androscoggin River within the available funding.
- Provide a wide variety of passive recreational uses and safe pedestrian access to Rt. 16.
- Create tourism opportunities to provide more destination activities to spur economic growth.



Project Limits



The multi-use Riverwalk Trail will be approximately 4,000 linear feet and located on land owned by the City lying between the Androscoggin River and Route 16 from the Service Credit Union Heritage Park to the Twelfth Street Bridge.



Engineering for your future

Funding Program Requirements

- Entire project must comply with NHDOT Local Public Agency (LPA) Requirements
 - Funding made available by Federal Highway Administration (FHWA)
 - Federal funds carry many requirements outside of typical construction projects
 - City must follow strict, very detailed requirements
- Each project phase requires review and approval by NHDOT
 - Public Involvement
 - Design Process
 - Environmental/Cultural Resource Impacts
 - Utilities
 - Bidding & Construction
- Federal Labor Compliance Requirements



Engineering for your future

Project Schedule

- Design Process – Summer through Fall 2018
 - Public Involvement
 - Local Concerns Meeting – Tonight
 - Programming Survey – June through July
 - Public Presentation of Preferred Alternative – August 7th (To Be Confirmed)
 - Engineering
 - Environmental/Right-of-Way/Utility clearances
 - Preparation of Construction Documents
- Bidding – Winter/Spring 2019
- Riverwalk Construction – Summer through Fall 2019



Engineering for your future

Project Area – Existing Conditions

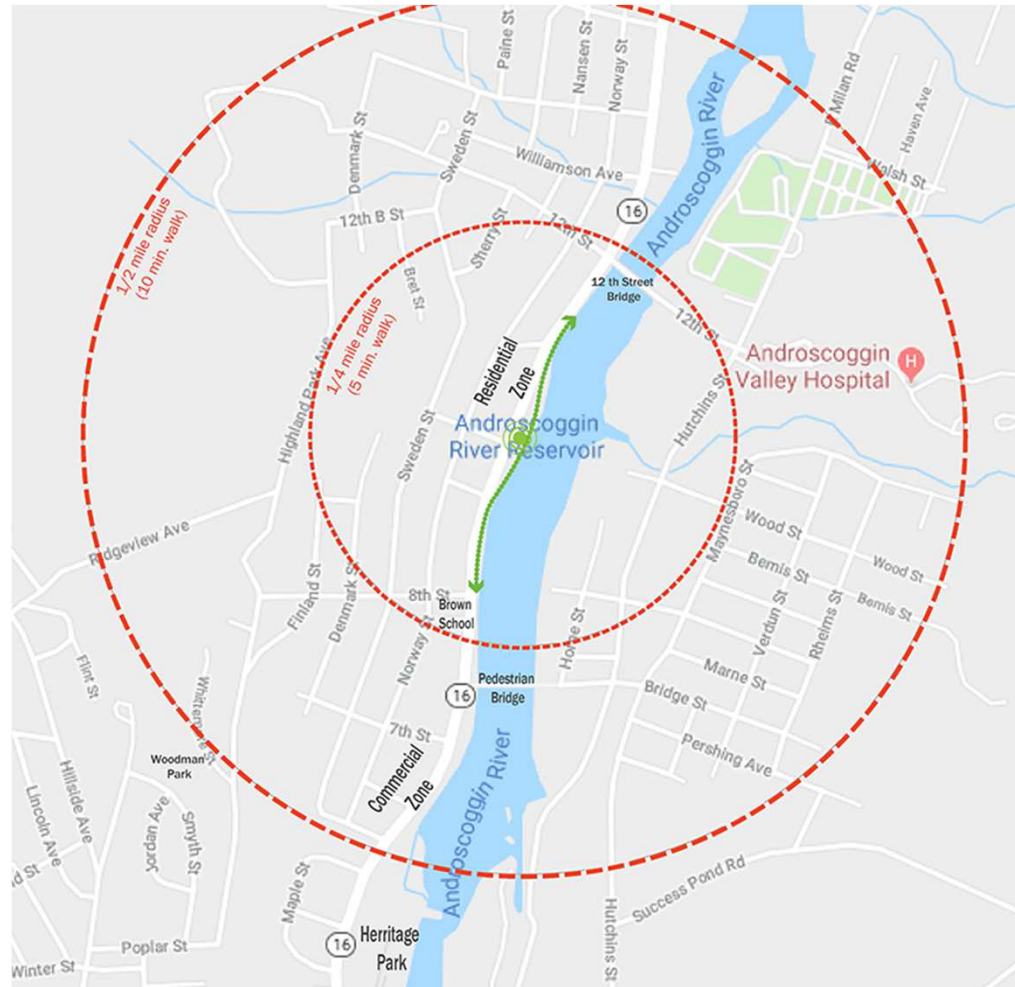


Project Area

The Riverwalk is primarily a linear multi-use trail, but in its design, consideration shall also be given to the surrounding public park space.

The Riverwalk should be considered both a **connection** and a **destination**.

Community parks should have a **broad public purpose**, focusing on meeting community, regional, and tourism needs.



Project Considerations - Uses



The Riverfront should accommodate a variety of uses from active, jogging or biking, to Passive, sitting on a bench enjoying the view. Complete ADA accessibility required.

Project Considerations - Recreation



Trails, play spaces, and paddleboats.



Engineering for your future

Project Considerations - Civic Space



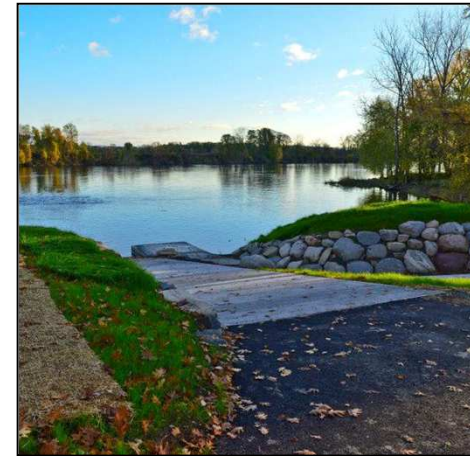
Gathering and events, private contemplative, enjoyment, and appreciation.

Project Considerations - Commerce



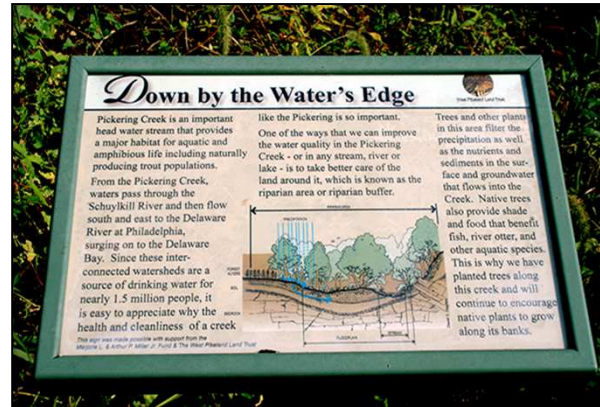
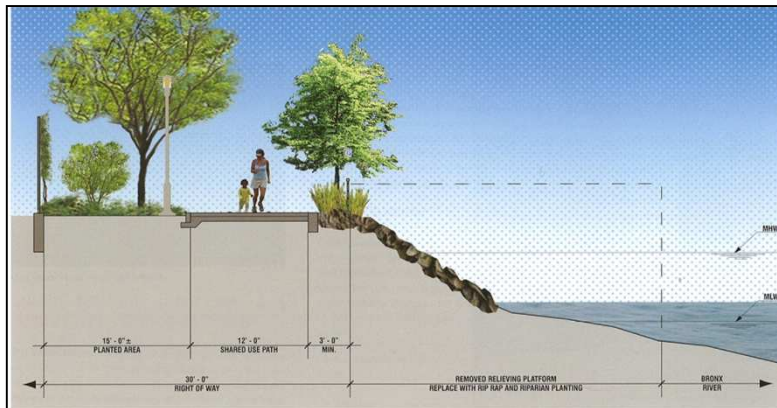
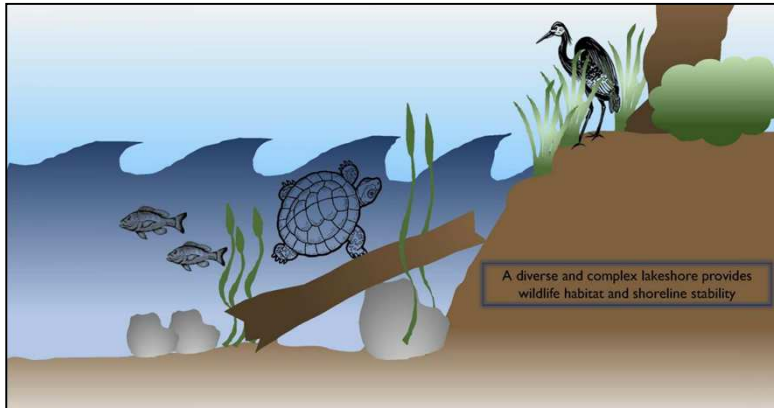
Festivals and events, pop-up beer gardens, food trucks, boat and equipment rentals.

Project Considerations – River Access



Boat ramp, stepping stones, and fishing piers.

Project Considerations – Riverbank

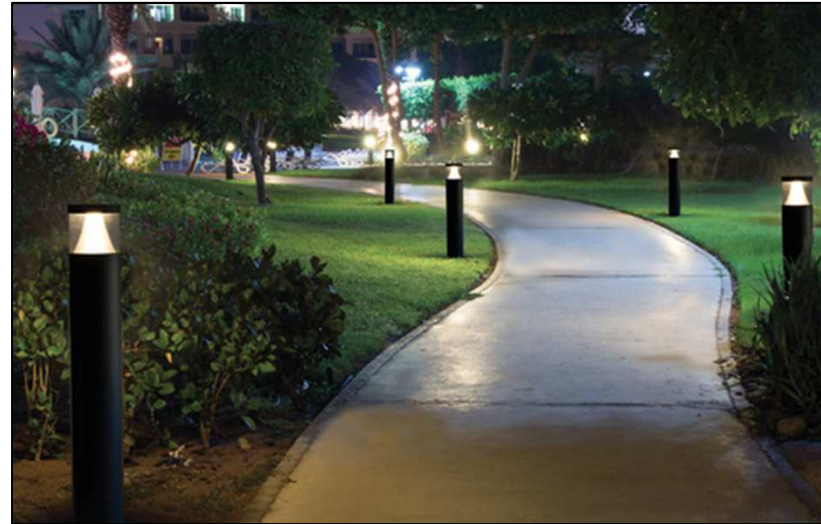


Riverbank stabilization treatment should repair existing bank erosion and reduce potential for future erosion, provide habitat for desirable wildlife, be visually attractive, and require minimal maintenance.

Project Considerations – Lighting & Power



Light style and power needs.



Project Considerations - Nature



Naturalized edge treatment, view preservation and enhancement, stormwater management, habitat enhancement, and wildlife management.



Engineering for your future

Project Considerations – Art & Education



Heritage, ecology, and site history.



Engineering for your future

Project Considerations – Resiliency



The Riverwalk and Park should be built to **withstand flooding** with little impact.

Special Project Considerations

- Connection to Twelfth Street Bridge
 - Likely requires substantial structure on bank of river.
 - High construction cost.
 - Connection value vs. other amenities?
- Riverwalk surface treatment
 - Permitting agencies may require a permeable surface.
 - Long-term maintenance concerns.
- Fencing
 - May require fencing between trail and river adjacent to steep riverbank.
- Geese
 - Design considerations to reduce nuisance.

Programming Survey

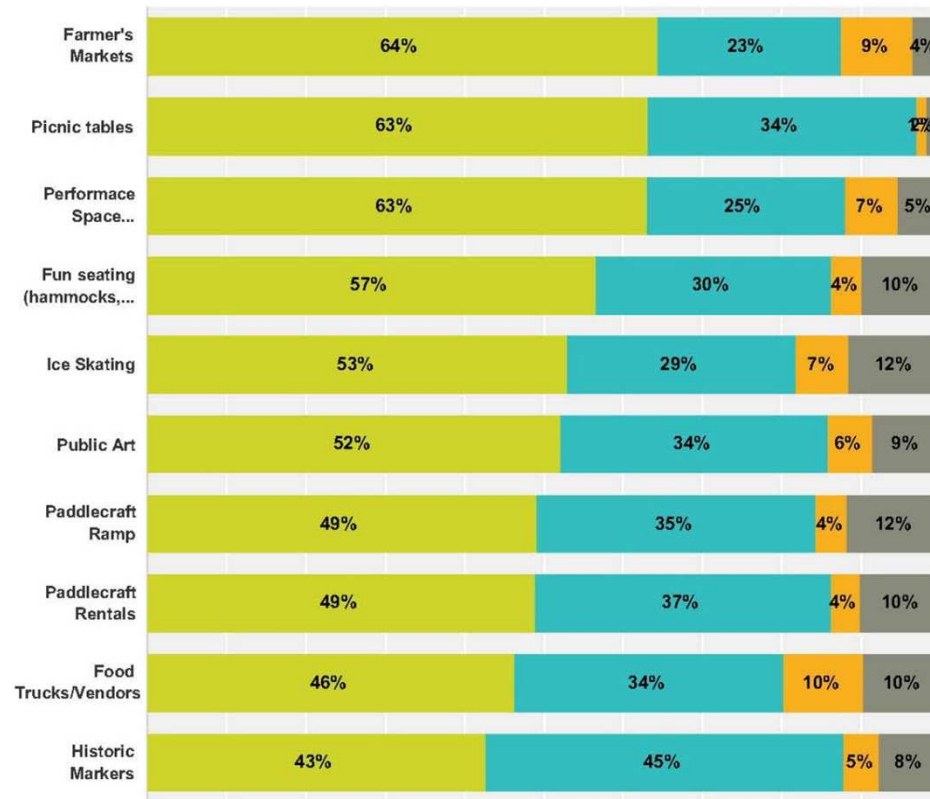
Example of desired activities and elements already identified:

- Playground
- Fishing pier
- Paddle boat launch
- Exercise stations
- Gazebos
- Food trucks
- Nature walk with interpretive signs
- Benches and picnic tables
- Restrooms

WHAT WOULD YOU LIKE TO SEE?

Q1 Please indicate your thoughts on the following park program ideas:

Answered: 749 Skipped: 0



Available online and hard copy at Planning Department on June 19th.

Engineering for your future

Contact Information

Jay Poulin, PE
HEB Engineers, Inc.
2605 White Mountain Highway
PO Box 440
North Conway, NH 03860
Phone: (603) 356-6936
E-mail: jpoulin@hebengineers.com



Engineering for your future