

SPOHN RANCH SKATEPARKS



PROPOSAL FOR
PROFESSIONAL SKATEPARK DESIGN/BUILD SERVICES

CITY
OF
BERLIN



SPOHN RANCH, INC. | P: 626-330-5803 | F: 626-330-5503
W: SPOHNRANCH.COM | E: INFO@SPOHNRANCH.COM
6824 S CENTINELA AVE. LOS ANGELES, CA 90230
DESIGN. BUILD. COME TOGETHER.

SECTION 01 **STATEMENT OF INTEREST**

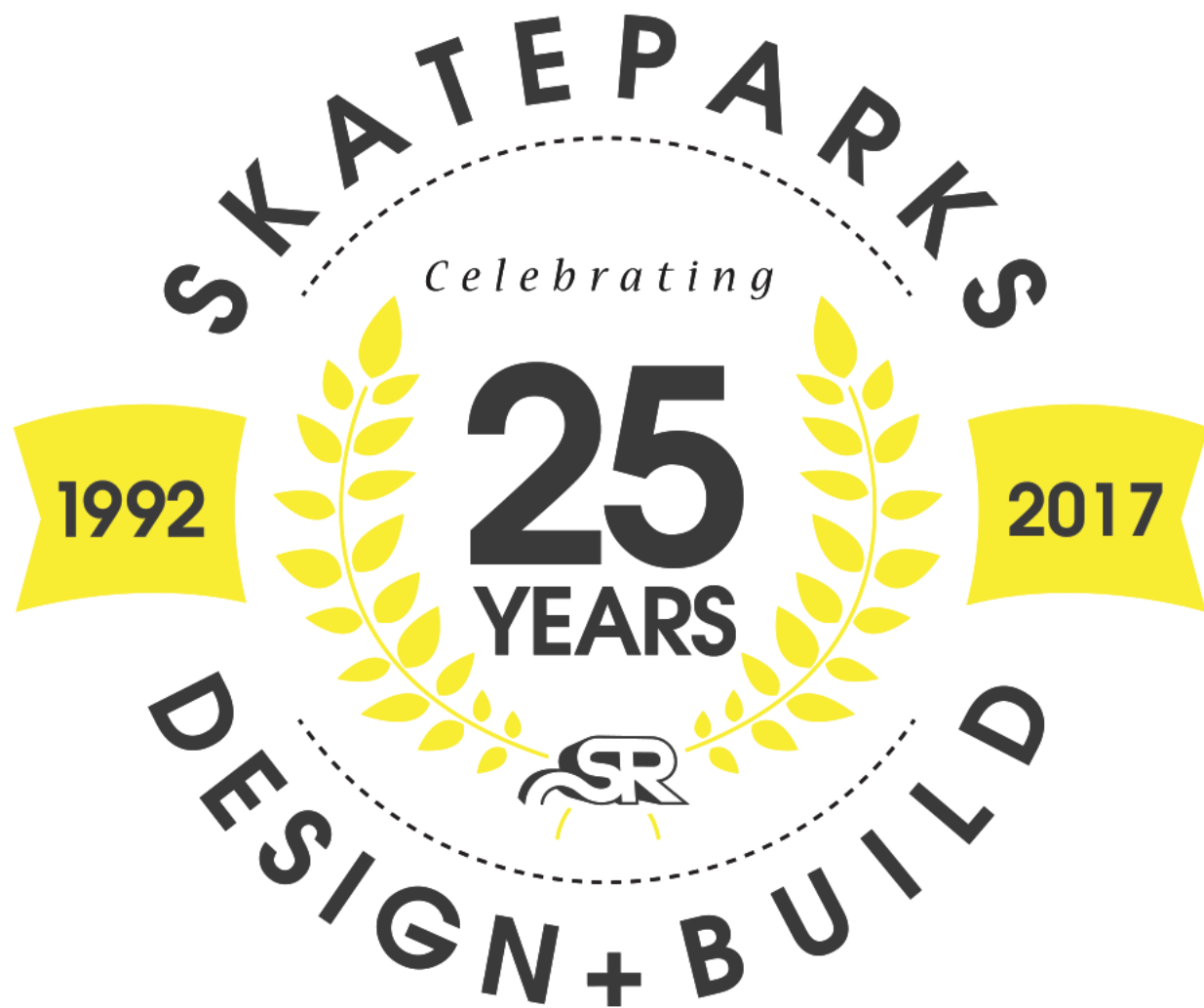
SECTION 02 **QUALIFICATIONS**
FIRM OVERVIEW
CLIENT TESTIMONIALS
AWARDS & RECOGNITION
CORPORATE SECTOR
PROJECT EXAMPLES

SECTION 03 **PROJECT TEAM**
ORGANIZATION CHART
AARON SPOHN – PRINCIPAL-IN-CHARGE
CHARLIE WILKINS – LEAD DESIGNER
MARK BRADFORD – CONSTRUCTION SUPERINTENDENT
KIRSTEN DERMER – ADMINISTRATIVE

SECTION 04 **PROJECT APPROACH**
PHASE 1 – DESIGN DEVELOPMENT
PHASE 2 – CONSTRUCTION DOCUMENTS
PHASE 3 – CONSTRUCTION
SCHEDULE

SECTION 05 **CONCEPTUAL DESIGN**
RENDERINGS
COST ESTIMATE

SECTION 06 **SUPPLEMENTAL INFORMATION**
SPOHN RANCH BROCHURE



James Wheeler, City Manager
City of Berlin
168 Main Street
Berlin, NH 03570

FRIDAY, OCTOBER 13, 2017

RE: REQUEST FOR PROPOSALS – PROFESSIONAL SKATEPARK DESIGN/BUILD SERVICES

Dear Mr. Wheeler,

Thank you for the opportunity to present Spohn Ranch's proposal for the professional design/build services that will bring a state-of-the-art skatepark to Berlin's Community Field.

We've followed this project closely over the past year and have developed an unparalleled understanding of the project's goals, as well as potential constraints. Intimate background knowledge enables our team to hit the ground running, without having to play catch-up.

While Spohn Ranch was founded and remains based in California, through years of successful design/build skatepark projects in the region, we have developed a significant New England presence and have become well-versed in working intelligently and efficiently outside of our home state.

Our connection to New England is due in large part to our team's lead designer and draftsman, Charlie Wilkins. Massachusetts born and bred, Charlie is a professional skateboarder of nearly 20 years and an undisputed pioneer of the New England skateboarding scene. While he gained fame grinding and sliding across Boston's urban architecture, he never stopped giving back to New England skateboarding – judging regional competitions, hosting an annual skateboard camp at Rye Airfield in New Hampshire and making use of expert AutoCAD skills to design skateparks.

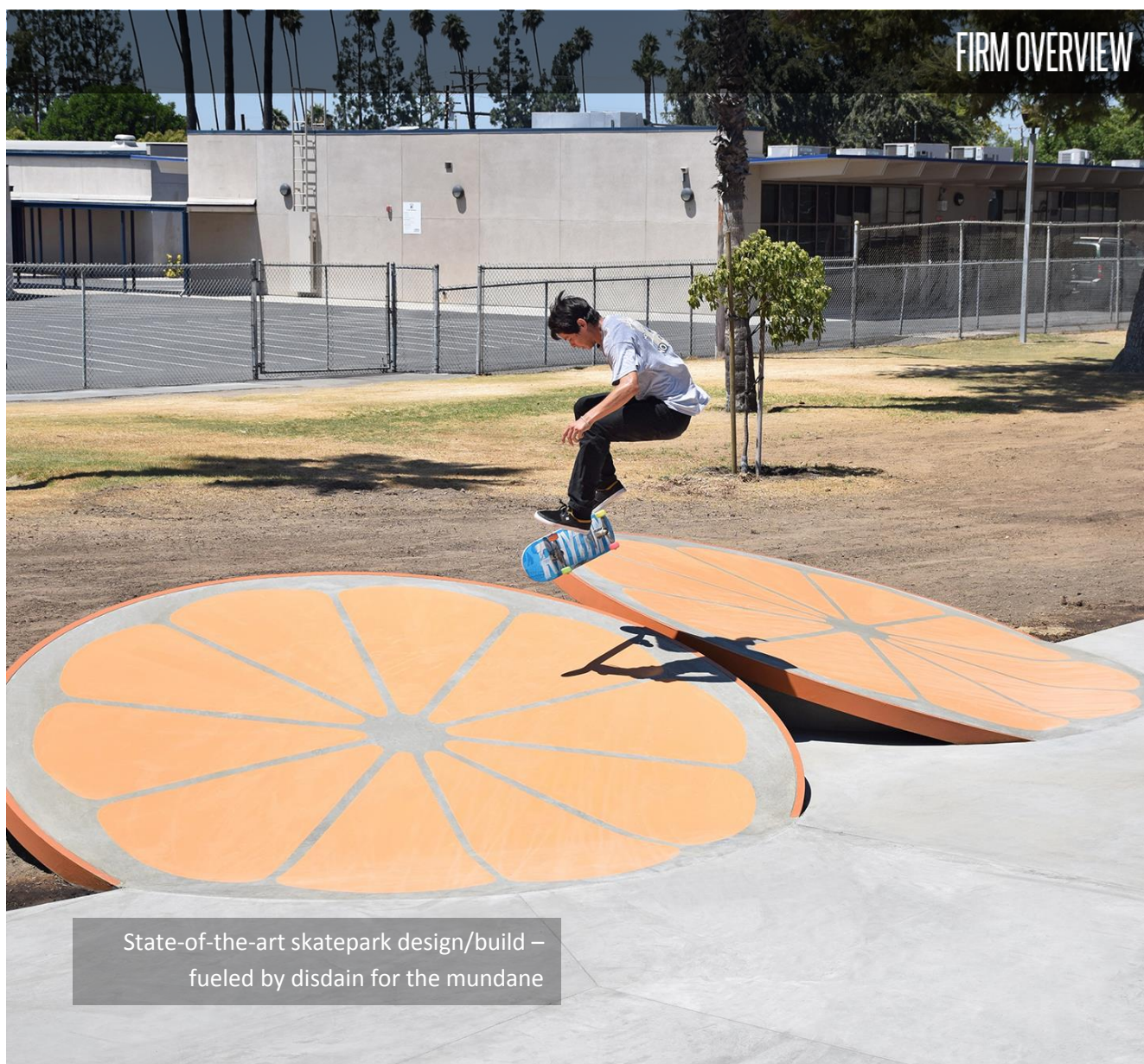
Charlie has prepared a preliminary concept to showcase our design aesthetic and serve as a starting point for discussion. That discussion must balance the needs of three very different groups – the government, the community and the users. With a long history of working skillfully with all three, we look forward to a collaborative process.

From first pencil sketch to final concrete pour, we sweat the small stuff. Our attention to detail not only ensures a smooth process, it also sets the stage for decades of successful use. When a community is entrusting us with its most valued assets – its kids and its real estate – we don't take the responsibility lightly.

Our comprehensive design/build process, dedicated team members and legacy of success are detailed in the following pages. Please don't hesitate to reach out with any questions.

Sincerely yours,

Aaron Spohn, Founder & President
Spohn Ranch, Inc.
6824 S Centinela Los Angeles, CA 90230
626-330-5803 x202 (Office) | 818-612-7711 (Cell)
Aaron@spohnranch.com



State-of-the-art skatepark design/build –
fueled by disdain for the mundane

Spohn Ranch began as a community, anchored by Aaron Spohn's backyard half-pipe, and grew into an award-winning skatepark design/build firm. A cornerstone of action sports progression for over 20 years, Spohn Ranch's backyard roots have spread globally, culminating in hundreds of cutting-edge creations.

From permanent skateable landscapes to innovative installations for high-profile events, Spohn Ranch has played an invaluable role in the exponential growth of action sports. In the private sector, Spohn Ranch became a household name by designing/building courses for film, television and world-class action sports competitions. In the municipal world, Spohn Ranch has consistently been a pioneering firm, most recently taking a lead role in transforming skateparks into vibrant community spaces with architectural finesse and sculptural elements that double as visual focal points.

SPOHN RANCH – PRESENT DAY

- 12 in-office staff – drafters/designers, project managers, estimators and support staff
- 25 in-the-field staff – shotcrete nozzlemen, concrete craftsmen, carpenters and equipment operators
- East LA fabrication shop – 25,000 square foot space for steel fabrication and equipment/tool storage
- Licensed General Contractor in multiple states

PROFESSIONAL AFFILIATIONS

- National Recreation & Park Association (NRPA)
- American Society of Landscape Architects (ASLA)
- U.S. Green Building Council (USGBC)
- American Concrete Institute (ACI)
- American Shotcrete Association (ASA)
- Concrete Specifications Institute (CSI)
- American Society for Testing & Materials (ASTM)
- World Skateboarding Federation (WSF)

INSURANCE

Spohn Ranch maintains, at a minimum, the following coverage. Certificates are available upon request.

- **Errors and Omissions / Professional Liability** - \$2,000,000 per occurrence, \$2,000,000 aggregate
- **Workers Compensation and Employers Liability** - \$1,000,000
- **Automobile Liability** for owned, non-owned and hired vehicles - \$1,000,000 per occurrence, \$2,000,000 aggregate
- **Comprehensive General Liability** or **Commercial General Liability** covering all operations or job specific - \$1,000,000 per occurrence, \$2,000,000 aggregate
- **Excess Liability / Umbrella** - \$9,000,000

FINANCIAL STABILITY

2017 marks twenty-five years of uninterrupted service, focused solely on skatepark design and construction. We take pride in being a passionate and responsible family-owned business

- Zero bankruptcies, loan defaults, changes of ownership or operation under a different name
- Zero liquidated damages
- Zero instances of E&O insurance being used

We are currently bonded with Travelers Casualty and Surety Company of America, with a bonding capacity in the amount of **\$3 million per project and \$6 million aggregate**. We have a spotless bonding history over 20+ years of business – none of our bonds or sureties have ever been called upon for any reason.

LITIGATION HISTORY

Spohn Ranch has neither litigation history associated with project performance nor any past or pending litigation against an Owner with whom we've contracted.

CLIENT TESTIMONIALS

"It's an excellent street-plaza design, with just enough transitions to make it well-rounded.

should be an example for other communities to follow

It has something for all skill levels, and is exactly the type of project, area, and advocacy that we want to get involved with. It should be an example for other communities to follow."

Tony Hawk, Professional Skateboarder
Ernest McBride Skatepark – Long Beach, CA

"In addition to being a pro skater for over 20 years, I am the creative director for the Dew Tour. The Dew Tour needed a professional class competition bowl that would showcase the best of modern vert and transition skateboarding.

one of the best pieces of skateable terrain ever built

The team at Spohn Ranch was able to take my ideas and deliver a finished product that was not only the world's first portable bowl, but one of the best pieces of skateable terrain ever built."

Chris Miller, Professional Skateboarder
Dew Tour Bowl – Ocean City, MD

"The Cape May County Skatepark was years in the making. We started out early-on discussing the potential to build a world-class skateboard park in Ocean City, but we were operating on a shoe string budget. Spohn Ranch's team did preliminary renderings that really helped me sell the idea to the other city leaders and the community.

Spohn Ranch consulted with the community and engineering department every step of the way from site selection, design, materials, construction and roll-out. They held multiple community meetings during which design and impact to the community were discussed. Every facet of our community had an opportunity to share their thoughts.

delivered the park ahead of schedule and on budget

It was a challenging project and their work was nothing short of spectacular. The design that we chose was completely custom and in harmony with our unique skate and surf culture. The design was so impressive that it facilitated us winning a 500K grant, which helped us offset a significant percentage of our costs. The construction process was well planned and executed. They met all of their deadlines and delivered the park ahead of schedule and on budget. I strongly recommend Spohn Ranch and expect that we will use them again in the future."

Michael DeVlieger, City Councilman
Cape May County Skatepark – Ocean City, NJ

"We recently completed the construction of our skatepark and the quality of work displayed by your company was outstanding. You showed a high degree of integrity, responsibility, professionalism and ambition. Your judgment resulted in a design that is not only logical and practical, but so unique that has left our "kids" speechless.

a staple in the park and recreation field for quite some time

Spohn Ranch has been a staple in the Park and Recreation field for quite some time, you continue to exceed expectations and your products/services would be an asset to any organization so I am pleased to give you my wholehearted endorsement."

*Sue Swithin, Director of Parks and Recreation
Milestone Park Skatepark – Sandwich, IL*

"From the initial group meeting with the local skaters, through conceptual/final design and construction, Spohn Ranch brought their "A" game.

knowledge and experience in the design and construction of skateparks is beyond words

Spohn Ranch's knowledge and experience in the design and construction of skateparks is beyond words. I do not hesitate in recommending Spohn Ranch to design and construct your skatepark. Spohn Ranch's attitude and passion in skateparks is so contagious that it makes everyone love the sport of skateboarding."

*Edward Balderrama, Project Manager
Washington Park Skatepark – Alamogordo, NM*

"When you are replacing a wood ramp skatepark built in the late 90's over top of a Cold War era Nike Ajax Missile Magazine on a limited budget, I cannot imagine having a better partner than Spohn Ranch. Your team at Spohn were the ultimate professionals – easy to work with, committed to delivering an excellent product, patient and extremely responsive.

cannot imagine having a better partner than spohn ranch

We selected Spohn Ranch for our project after hearing from our group of children and adult skaters that all of their favorite skateparks were designed and built by Spohn. Staff and riders were not disappointed. Thank you for transforming our old wood ramp park into a skating mecca for our area."

*Mark Furlo, Director of Parks and Recreation
Nike Park Skatepark – Isle of Wight, VA*

"We first started working with Aaron Spohn in 2008 after meeting him at a recreation conference where Mr. Spohn served as an expert panelist on designing and building skateboard parks.

Mr. Spohn was a man true to his words

Mr. Spohn answered many questions, gave suggestions and offered to lead us into building the best skateboard park in our area. He was a man true to his words and with his knowledge, dedication and patience, we opened two new skateboard parks in the City of Gardena in 2012."

*Kelly Fujio, Director of Recreation, Parks & Facilities
Rowley & Johnson Park Skateparks – Gardena, CA*

"The true professionalism and compassion of the Spohn Ranch team was present each day from beginning to end. Throughout the process of design and construction, Spohn's team of experts displayed trustworthiness, compassion and reliability.

craftsmanship exceeded our expectations

Words cannot describe the true giving nature of the Spohn Ranch team, who never hesitated to answer questions about the process or listen to our concerns. Moreover, the excellent quality and craftsmanship exceeded our expectations."

*Irene Chong, Los Angeles Unified School District
Le Conte Middle School Skatepark – Los Angeles, CA*

"The entire team: from the designers to the onsite builders, were great to work with from start to finish. The onsite crews were professional, courteous to other staff members and informative to the public during the process as well. I was impressed that the onsite crew members were also skaters, so they had a personal interest in making the final product flow from one amenity to the next to create a challenging and unique skating experience.

I was impressed that the onsite crew members were also skaters

During construction, a couple of stray dogs would make their way to the site of the action daily. The crews befriended the dogs and gave them food and water. Then, a crewmember did not want to part with the one dog at all and took the necessary steps to get its shots and license for official adoption. The dog's name is now Carla and accompanies the crews on construction jobs around the country.

Planz Park Skate Park Opening Day was a big hit with well over 200 young people in attendance. The skate park can be enjoyed by beginners as well as advanced skaters, which is desirable for a facility where different ability levels can learn from each other. Great company, great results and I would recommend Spohn Ranch to other communities interested in a quality skate park, using the design build process."

*Dianne Hoover, Director of Parks and Recreation
Planz Park Skatepark – Bakersfield, CA*

"I want to say a BIG "THANK-YOU" to you and all at Spohn Ranch, Inc. who helped to build the Lathrop Skatepark. We have been open for over a week now and everyone, skaters, parents, neighbors, City Council members, community members and recreation staff from other cities say we have one of the "sickest" parks in the Central Valley!

with great pride, I get to respond, "Spohn Ranch built our park!"

The craftsmanship is excellent and almost everyone asks' "who built this park?" Luckily, and with great pride, I get to respond, "Spohn Ranch built our park!" Skaters give me knowing nods of appreciation whenever I say that, rolling away from me knowing that the premiere skatepark building company on Planet Earth built the Lathrop Skatepark."

*Gabriel Goulart, Recreation Supervisor
Lathrop Skatepark – Lathrop, CA*

"I was very impressed with Spohn Ranch's ability to guide the Oregon Park District through the beginning steps of gathering information all the way through the grand opening. The years of expertise from each of the Spohn Ranch staffers was evident in the professionalism and ease of the entire process.

streetscape feel and
skateable art our youth and
community were looking for

Throughout every development phase Spohn Ranch was sure to provide us with details that would best suit our community and vision. Spohn Ranch was able to provide a design/build that captured the streetscape feel and skateable art our community and youth were looking for."

*Erin Folk, Superintendent of Recreation
Prairie Side Skate Plaza – Oregon, IL*

"Each phase afforded us the opportunity to work with a different senior staff on the Spohn Ranch team; consistently what was demonstrated was a passion for skating, a desire to work collaboratively and true commitment to the project.

willingness to follow agency
protocol and make this big
project run smoothly

Spohn Ranch demonstrated again and again their willingness to work with multiple players, follow agency protocol and make this big project run smoothly. I can say wholeheartedly we are overwhelming pleased with the results and would recommend Spohn Ranch with no reservations."

*Angela Chambers, Vice President of Educational
Services (Board of Child Care)
BCC Skatepark – Baltimore, MD*

AWARDS & RECOGNITION

- **AMERICAN PUBLIC WORKS ASSOCIATION – KENTUCKY CHAPTER**
Project of the Year, 2014 (Chautauqua Park Skatepark – Owensboro, KY)
- **AMERICAN PUBLIC WORKS ASSOCIATION – SAN DIEGO-IMPERIAL COUNTIES CHAPTER**
Honor Award, 2017 (Kimball Skatepark – National City, CA)
- **CALIFORNIA PARK AND RECREATION SOCIETY**
Award of Excellence in Park Planning & Development, 2017 (Stanton Skatepark – Stanton, CA)
- **CALIFORNIA PARK AND RECREATION SOCIETY**
Award of Excellence for Recreation & Community Services, 2009 (Fontana Skateparks – Fontana, CA)
- **IOWA READY MIXED CONCRETE ASSOCIATION**
Excellence in Concrete Award, 2012 (Oskaloosa Skatepark – Oskaloosa, IA)
- **NEW JERSEY RECREATION AND PARKS ASSOCIATION**
Award for Excellence in Design, 2013 (Holland Park Skate Plaza – Elizabeth, NJ)
- **NEW JERSEY RECREATION AND PARKS ASSOCIATION**
Award for Excellence in Design, 2015 (Maplewood Skatepark – Maplewood, NJ)
- **NEW JERSEY SOCIETY OF MUNICIPAL ENGINEERS**
Municipal Project of the Year, 2013 (Dealy Field Skatepark – Sea Isle City, NJ)
- **LOUISIANA MUNICIPAL ASSOCIATION**
2014 Community Development Award, 2014 (Fireman's Skate & Bike Park – Houma, LA)
- **CITY OF SPARTANBURG, SOUTH CAROLINA**
Award for Excellence in Design, 2010 (Hot Spot Skatepark)
- **WORLD OF CONCRETE**
Finalist for "Crews that Rock" Award, 2011 & 2013 (Dew Tour Bowl & BSA Summit)
- **SKATEPARK ASSOCIATION OF USA**
Award for Design Excellence, 2004
- **AMERICAN SOCIETY OF LANDSCAPE ARCHITECTS**
Award for Excellence Nominee, 2010 (Daybreak Skatepark – South Jordan, UT)
- **HUCK MAGAZINE**
"The Future of Skatepark Design", 2008 (Daybreak Skatepark – South Jordan, UT)



Some of our most challenging work has been in the private sector - designing and building for Fortune 500 companies and the world's top professional skateboarders. After a rigorous vetting process, these clients consistently choose Spohn Ranch because of our unique ability to deliver quality terrain under any condition imaginable – including complex sites, logistical hurdles and extreme time constraints.

Our corporate clients and the athletes they host demand perfection when the skatepark is the stage for a live television event. The spacing between every obstacle has to be precise, the height and angle of every feature has to be perfect and the quality of the construction has to be flawless. With over 20 years of experience in this segment, we've really been able to hone our design and construction skill sets - injecting that attention to detail into all of our municipal projects.

HIGHLIGHTED PRIVATE PROJECT LIST

- **Professional Competitions** – ESPN X-Games, NBC Mountain Dew Tour, Kimberly Diamond Cup, D-Town Throwdown, Gravity Games, Vans Triple Crown, East Coast Surfing Championships
- **Corporate Clients** – Red Bull, Vans, Gatorade, MTV, Boost Mobile, Got Milk, Ford, Tedx, Hewlett Packard, Reese's Puffs, Guinness Book of World Records, Kansas City Speedway, Warped Tour
- **Film/Television** – *Brink*, *Grind*, *Accepted*, OPM's "Heaven is a Half-Pipe"



20+ YEARS OF SPECIAL EVENT DESIGN/BUILD





EVERYTHING WE LEARN BUILDING SKATEPARKS FOR THE WORLD'S
TOP PRO ATHLETES, INSPIRES WHAT WE ROLL INTO YOURS



SPOHN RANCH PROJECT PORTFOLIO



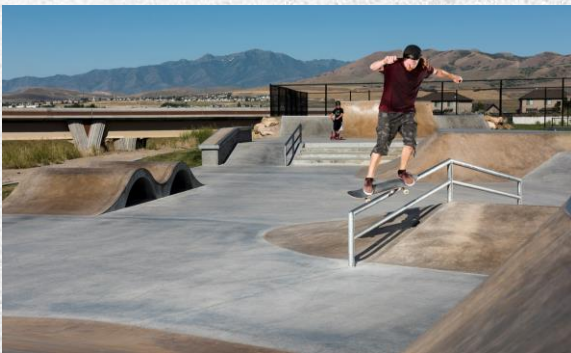
Highly respected within the New Jersey scene and well-versed in the State's myriad of rules and regulations, Spohn Ranch was the clear choice for Ocean City's modern concrete destination. During design workshops we collaborated closely with local skateboarders to create a skatepark design that reflected the unique makeup of the community. OC's surf culture was a dominant theme, making a surf-inspired snake run and bowl top priorities. Ensuring the skatepark design didn't cater to just one style of skateboarding though, we skillfully integrated street elements like stairs, manual pads and ledges.

Located just blocks from the beach, the skatepark is poised to host competitions and demonstrations – serving as entertainment for the thousands of summertime visitors, as well as a platform for regional talent to build a name for themselves.

OCEAN CITY, NEW JERSEY

CAPE MAY COUNTY SKATEPARK
12,000 SQ. FT. - DESIGN/BUILD - 2015

SPOHN RANCH PROJECT PORTFOLIO



In March of 2017, Spohn Ranch completed construction of the Lehi Skatepark, adding 12,000 square feet of concrete to Lehi's picturesque landscape. Since opening, the Lehi Skatepark has received incredible praise. In addition to a tidal wave of reviews from local skateboarders and social media influencers, the skatepark was also deemed the official destination for Go Skateboarding Day in Utah – a national holiday for skateboarders.

The roadtrip-worthy facility features two bowls. The first is 8-10.5' deep with round corners in the shallow end and 1' of vert in the deep end. The deep end also boasts a section of parallel walls designed to emulate a vert ramp. The second bowl is kidney-shaped, 4-6' deep and geared toward beginner-intermediate riders. A collection of modern street elements encompass the landscape south of the two bowls. Connected via transition and flowing lines, they include stairs, handrails and manual pads.

LEHI, UTAH

POINTE MEADOW PARK SKATEPARK
12,000 SQ FT - DESIGN/BUILD - 2017

SPOHN RANCH PROJECT PORTFOLIO



DUBLIN, OHIO

COFFMAN PARK SKATEPARK
14,000 SQ FT - DESIGN/BUILD - 2015

While the City's original skatepark served the community well for many years, flawed design and awkward geometry limited its potential. Like many early generation skateparks, the space also focused too heavily on transition-style terrain and offered scarce opportunities for street-style skateboarding.

The input sessions we hosted with local skateboarders confirmed our initial assessments and paved the way for a modern skatepark design with well-balanced terrain. Despite unique drainage conditions preventing below-grade terrain, we were able to create a flowing above-grade transition section that leads into a thoughtfully spaced street section. The 14,000 square foot skatepark also features a sculptural wave feature that goes over-vert and is guaranteed to become an iconic photo backdrop.

SPOHN RANCH PROJECT PORTFOLIO



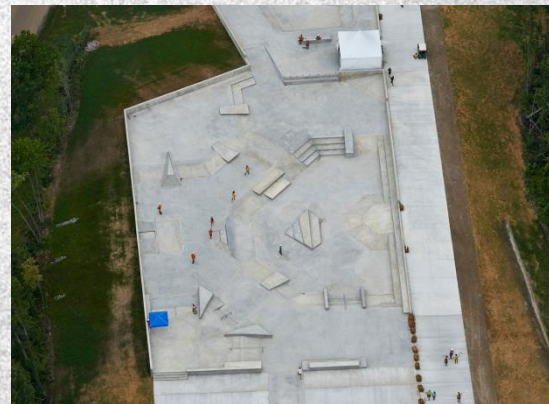
The Hyde Park Skatepark is a central component of the campaign to revitalize Niagara Falls as a modern and youthful place to live. Without a doubt Western New York's premiere skatepark, the design was shaped by the linear constraints of Hyde Park Lake and public input gathered at a series of design workshops.

The workshops revealed a community consensus for a well-balanced layout with both street and transition-style terrain and clear flow, meaning no crisscrossing traffic patterns that could lead to collisions. Additional requests included a mini-ramp section and a section with flat ledges and manual pads reminiscent of downtown NYC's plazas. Acting as prime designer and specialty sub-contractor during construction, Spohn Ranch's signature aesthetic came to fruition in the form of skateable "NF" letters.

NIAGARA FALLS, NEW YORK

HYDE PARK SKATEPARK
8,000 SQ FT - DESIGN/BUILD - 2016

SPOHN RANCH PROJECT PORTFOLIO



In one sentence – the largest and most comprehensive project to ever face the action sports landscape. The courses at the 10,000-acre Summit Bechtel Reserve in West Virginia are a showcase feature of the new \$1 billion permanent home to the Boy Scouts of America's quadrennial "Jamboree", an event drawing 50,000+ visitors per day.

We were chosen as the exclusive designer/builder for the 21+ concrete skateparks, dirt BMX tracks and specialty training zones encompassing an area over twice the size of any action sports facility in the country. Extending far beyond conventional design/build, we drew upon our 12 years of skatepark management experience to thoroughly plan all aspects of this world-class facility. To meet the goals and standards of the BSA we considered capacity, user density, queuing times, pedestrian flow patterns, skill levels and risk management before starting design.

GLEN JEAN, WEST VIRGINIA

SUMMIT BECHTEL RESERVE
400,000+ SQ. FT. - DESIGN/BUILD - 2013

SPOHN RANCH PROJECT PORTFOLIO



The first of two collaborations with the City of Anaheim and Disneyland Resort, Palm Lane Skatepark is a neighborhood-level skateboarding space flanked by soaring palm trees. Acting as design/build contractor, our first step involved a thorough analysis of the site – including pedestrian traffic patterns, law enforcement sight lines and drip lines of existing trees.

The design features a well-rounded mix of street and transition-style elements/terrain. Features are subtle in height and difficulty level, and while still fun enough for an advanced skateboarder, they are designed primarily for the beginner-intermediate skateboarders who live within the vicinity of the park. One of the design's signature elements is a pair of embankments shaped like oranges – paying tribute to Anaheim's agriculture roots. The sculptural nature of the elements will make for a unique photo/video backdrop, while providing neighborhood youth with a sense of local pride.

ANAHEIM, CALIFORNIA

PALM LANE PARK SKATEPARK
4,000 SQ. FT. - DESIGN/BUILD - 2016

SPOHN RANCH PROJECT PORTFOLIO



Asked, and they received. During the planning meetings and design workshops, Bakersfield's skaters expressed disappointment with the bowl at the City's other skatepark at Beach Park. Too deep, too tight and too gnarly was a recipe for discouragement and infrequent use. They asked if Planz Park could have a mellow bowl that even a beginner rider could have fun with. After seeing the smiles and high-fives at the grand opening, we got the feeling that we nailed it.

In addition to the bowl, the final design features a wide array of modern street-inspired features like steps, handrails and benches, as well as a one-of-a-kind roller-to-bank obstacle that pays tribute to the City of Bakersfield's iconic blue and yellow entrance arch.

BAKERSFIELD, CALIFORNIA

PLANZ PARK SKATEPARK
7,000 SQ. FT. - DESIGN/BUILD - 2014

SPOHN RANCH PROJECT PORTFOLIO



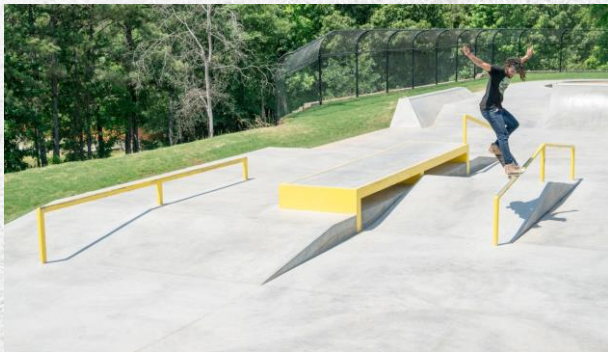
The result of rigorous analysis and collaborative community engagement, Rialto's Fergusson Park is home to one of the Inland Empire's premiere skateboarding landscapes. Inspired by the passion of a local family who had spent years advocating for a skatepark, we embarked on a design process aimed at creating a state-of-the-art facility that would serve both transition and street skaters in a harmonious way.

With the local inspiration in hand, we returned to the drawing board and developed a unique concept that would make efficient use of an existing hockey rink slab, while maintaining a sculptural and aesthetic quality. The final design features aspects of both modern urban architecture and traditional backyard pool skating. It also features an innovative shade structure design that invites families and spectators.

RIALTO, CALIFORNIA

FERGUSSON PARK SKATEPARK
16,000 SQ FT - DESIGN/BUILD - 2012

SPOHN RANCH PROJECT PORTFOLIO



RIVERDALE, GEORGIA

RIVERDALE SKATEPARK
7,000 SQ FT - DESIGN/BUILD - 2017

Skateboarders in Riverdale, Georgia had been seeking a place to call home for several years. After City staff conducted a nationwide search for skatepark designers and builders, Spohn Ranch was selected and we began the process of building that home. Our first step was hosting a design workshop where local skateboarders provided input on the types of elements and style of park they hoped to see.

Shaped first-hand by feedback from Riverdale skateboarders, the final skatepark design is 7,000 square feet of concrete bliss. It features a 4-6' beginner-intermediate bowl, modern street elements and key peripheral amenities including spectator seating, a shade structure and a drinking fountain. Acting as prime contractor, Spohn Ranch executed the design/build project from start to finish with a scope encompassing drainage, earthwork, steel fabrication, concrete/shotcrete, irrigation and landscaping.

SPOHN RANCH PROJECT PORTFOLIO



The City of Tillamook, Oregon, known more for dairy farms and delicious cheese than skateboarding and BMX bikes, is now home to a 7,000 square foot concrete skatepark at Goodspeed Park. After being selected as the City's skatepark designer and builder via a nationwide competition, we engaged in a collaborative skatepark design process with local skateboarders and BMX bike riders.

The skatepark design process ultimately produced Spohn Ranch's signature blend of street and transition – featuring a 4-6' bowl with a 7' pocket and a variety of street-inspired elements. Next up was the fundraising process, where we coordinated with local material suppliers and supported the City with materials for grant applications. When the funding came together, we packed up our tools and equipment and hit the road for the Oregon Coast, shaping the skatepark's curves with same passion and attention-to-detail as Tillamook's famed cheese producers.

TILLAMOOK, OREGON

GOODSPEED PARK SKATEPARK
7,000 SQ. FT. - DESIGN/BUILD - 2016

SPOHN RANCH PROJECT PORTFOLIO



This space is a part of a larger re-development project and was originally slated to be a venue for social gatherings such as concerts and farmer's markets. When the forward-thinking prime architect wanted to bring wheeled sports into the mix, we were invited to join the design team and lend our expertise.

The goal then became a vibrant multi-use plaza that would primarily cater to skateboards and bikes, while remaining a welcoming space for the entire community. The thought was that the non-skating population would enjoy watching the action, as well as appreciate the sculptural nature of the skateable elements. And for skaters, a skatepark that doesn't look like a skatepark and feels more like a naturally-occurring environment that just so happens to be perfect for skateboarding is truly a dream come true.

ELIZABETH, NEW JERSEY

HOLLAND PARK SKATE PLAZA
10,000 SQ FT - DESIGN/BUILD - 2013

SPOHN RANCH PROJECT PORTFOLIO



In July of 2015, the Prince George's County Department of Parks and Recreation proudly cut the ribbon at Walker Mill Regional Park's new crown jewel – a 14,000 square foot concrete skatepark. While this celebration marked the official opening, skateboarders from throughout Maryland & Virginia had already been flocking to District Heights for months for a firsthand taste of the fast lines and innovative terrain.

The County utilized a streamlined design/build approach with Spohn Ranch acting as both prime architect and general contractor. After a design process that blended the site's dramatic topography with flowing curves and modern street elements, we executed the full spectrum of construction – from bioretention and ADA pathways to shotcrete and steel fabrication. Colored concrete, shade sails and artistic spectator seating add to the modern aesthetic.

DISTRICT HEIGHTS, MARYLAND

WALKER MILL SKATEPARK
14,000 SQ. FT. - DESIGN/BUILD - 2015

SPOHN RANCH PROJECT PORTFOLIO



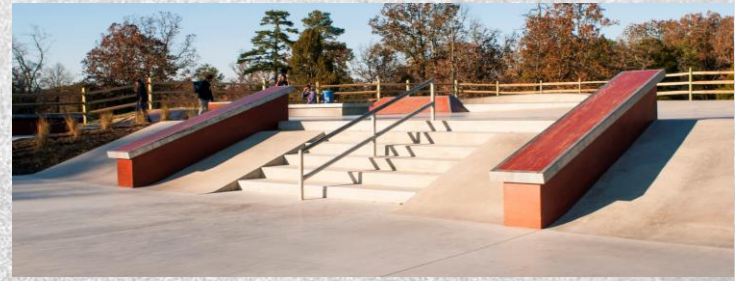
CICERO, ILLINOIS

LARAMIE PARK SKATEPARK
4,000 SQ FT - DESIGN/BUILD - 2016

The Town of Cicero, located just southwest of downtown Chicago, is now home to Cook County's most progressive bowl. Dubbed the "Laramie Park Extension", the overall project included a new animal welfare shelter, a dog park, sand volleyball courts and a skateboard park. Wheaton-based Planning Resources was the park's prime architect and selected Spohn Ranch as the project's skatepark designer and builder.

The skatepark was sited at the entrance to the park, which promoted visibility, but created a challenging design canvas with limiting angles. The crux of the skatepark design is a linear flow bowl with sharp hips, round hips, multiple waterfalls and a bank extension. The bowl transitions into a small street area featuring a handful of ledges and manual pads.

SPOHN RANCH PROJECT PORTFOLIO



The skatepark at Lake Fairfax Park in Reston is the Fairfax County Park Authority's premiere skateboarding destination. This spacious park features well-rounded terrain and an array of unique obstacles that will help the full spectrum of skateboarders evolve their skills.

An artfully designed, clover-shaped bowl anchors the northern end of the park, while streetscape-inspired features tinted with a vibrant red stain flow through the rest of the space. At the grand opening in October, local skateboarder Josh Harris commented, "There's so much here, it's like something you'd see in a video game. It was designed really well, and very creatively." Sponsored local skateboarder Diego Patrick also added, "I think this is the best skatepark in Northern VA by far. It's the concrete plaza skaters all over have been waiting for."

FAIRFAX COUNTY, VIRGINIA

LAKE FAIRFAX SKATEPARK
16,000 SQ. FT. - DESIGN/BUILD - 2012

SPOHN RANCH PROJECT PORTFOLIO



For the skaters and community members who had spent years advocating for a state-of-the art public facility in Gainesville, the Possum Creek Skatepark is nothing short of a dream come true. One of Florida's premiere skateboarding landscapes, the park is a triangular expanse of unique terrain. The park's focus on aesthetic symmetry and a diversity of skateable features makes it a one-of-a-kind destination skatepark.

This captivating skatepark features modern plaza elements, a multi-level bowl and inspiring obstacles which allow skaters to transition through the park's integrated landscaping. These landscaped areas give the skater's the feeling of a real urban environment, while providing opportunities for eco-friendly stormwater management. The park has also been the site of several regional competitions, as well as a pit stop for touring professional teams.

GAINESVILLE, FLORIDA

POSSUM CREEK SKATEPARK
18,000 SQ FT - DESIGN/BUILD - 2009

SPOHN RANCH PROJECT PORTFOLIO



On the south end of Gardena, Arthur Lee Johnson Memorial Park is home to 7,000 square feet of skateable terrain. The space flows naturally out of an existing hillside and sits adjacent to two basketball courts. A triangular theme weaves through the skatepark's interior and can be seen in the charcoal-tinted flatwork, as well as the park's dynamic features.

This artistic imprint accents the space with an unmistakable aesthetic quality. The park's features are sculptural versions of skatepark staples such as gaps, banks and hubba ledges. Located near several skateboarding company headquarters in the South Bay, the park is a favorite of many of the industry's top professionals as a warm-up spot before heading to the streets.

GARDENA, CALIFORNIA

JOHNSON PARK SKATEPARK
7,000 SQ. FT. - DESIGN/BUILD - 2012

SPOHN RANCH PROJECT PORTFOLIO



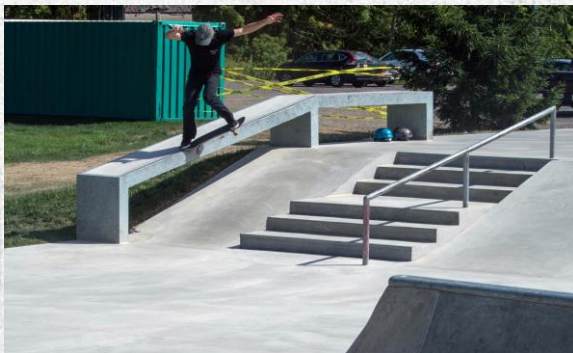
On the north end of Gardena, Rowley Park skatepark occupies a 7,500 square foot space nestled in-between a children's play area and a pair of tennis courts. If no skaters were present, community members could easily mistake the skatepark as a visually-striking public plaza. Inspired by modern urban architecture, this park gives Gardena's skateboarders the style of terrain they truly crave. At the same time, the park's features double as architectural focal points that will intrigue the community at large.

Seamlessly integrated into the Northeast corner of the park, this facility defines modern skateboarding environments – with vibrant colored concrete patterns, interior landscaping and an array of sculptural features.

GARDENA, CALIFORNIA

ROWLEY PARK SKATEPARK
7,500 SQ FT - DESIGN/BUILD - 2012

SPOHN RANCH PROJECT PORTFOLIO



ARMADA, MICHIGAN

ARMADA SKATE & BIKE PARK
6,000 SQ FT - DESIGN/BUILD - 2017

After years of fundraising and community advocacy by local non-profit Armada Bike and Skatepark Foundation, the Township of Armada, a small country town known as the pearl of Macomb County, now features a 6,000 square foot concrete skatepark. Acting as the prime design/build contractor, Spohn Ranch executed the skatepark project from start to finish – including stormwater management, earthwork, steel fabrication and concrete/shotcrete.

Armada has a large BMX population, so this project is a bit more BMX-focused than our typical project, but it will still cater to all wheeled sports. The design is centered around a 4'-6' transition section featuring a spine, cradle and extension. It also includes modern street elements such as a double set, handrail, ledges and an A-frame. A hitching post specifically designed for BMX bikes is the cherry on top.

SPOHN RANCH PROJECT PORTFOLIO



After 12 years of tireless fundraising and advocacy by local parents Roger and Fern Streich, the City of Janesville selected Spohn Ranch and Madison-based Ayres Associates to finally bring their skatepark project to fruition. Sub-grade composed of bedrock and local preference for plaza-style terrain drove an above-grade design, but we refused to settle for a strictly linear layout. A colored concrete swirl winds through the skatepark, at one point capitalizing on a natural elevation change at the site.

In addition to architectural and aesthetic finesse, the skatepark focuses on a healthy balance of terrain for varying skill levels and riding styles. And as an added bonus, construction was completed on-budget and on-schedule.

JANESVILLE, WISCONSIN

BOND PARK SKATEPARK
6,000 SQ FT - DESIGN/BUILD - 2015

SPOHN RANCH PROJECT PORTFOLIO



This one isn't just a skatepark. This is a permanent tribute to the legacy of Prescott Lee Goodman and a testament to the spirit of a small community who came together in the face of heartbreak. The "Bikes with Wings" Foundation quickly recognized that Spohn Ranch was the missing puzzle piece – a firm with decades of experience designing and building BMX terrain.

The design workshop we hosted for local riders confirmed the Mt. Washington scene was dominated by BMX, an interesting change of pace compared to our typical skateboarding-influenced project. Input from that meeting led to a flowing concrete space with a 4.5-6' L-shaped bowl and an array of BMX staples including rollers, a jump box, spine, wall-ride and sub-box. Knowing skateboarders from surrounding communities would ride the park either way, we also included a few key street elements such as a long ledge, a flat rail and an a-frame.

MT. WASHINGTON, KENTUCKY

PLG SKATE & BIKE PARK
8,000 SQ. FT. - DESIGN/BUILD - 2016

SPOHN RANCH PROJECT PORTFOLIO



A neighborhood-style skatepark that has it all, Howard County's 12,000 square foot skatepark was an integral part of a revitalization project for the North Laurel Community Center. Collaborating with local landscape architects, Mahan Rykiel, our design process combined public design workshops and social media interfaces for a robust dialogue with the local skateboarding community.

Our final design speaks to a diverse set of stakeholders, including up-and-coming street skaters, seasoned bowl riders and community members who can appreciate the park's sculptural and aesthetic quality. This unique venue features a fun 4-6' bowl, an array of ledge combinations and three large skateable boulders! It's no surprise then, that locals often refer to it as the best skatepark in the greater DC area.

NORTH LAUREL, MARYLAND

NORTH LAUREL SKATEPARK
12,000 SQ FT - DESIGN/BUILD - 2011

SPOHN RANCH PROJECT PORTFOLIO



OREGON, ILLINOIS

PRAIRIE SIDE SKATE PLAZA
6,000 SQ. FT. - DESIGN/BUILD - 2011

It's always exciting when a client recognizes the artistry of skateboarding and gives us the creative freedom to think outside the box. Breaking the norm of uninspiring back-and-forth skateparks, we created an architectural layout crisscrossed with integral landscaping and colored concrete sculptures. Smart stormwater management ensures the park sustains years of skateboarding and BMX abuse.

The skate plaza's unique design has drawn attention from skaters throughout the State of Illinois. During the grand opening ceremony, Jim Coutts, Oregon Park District Recreation Director, noted "From the Park District's point of view, whenever we have a project or open a venue, or do anything, the measure of success is whether it's used or not. From the looks today and the weeks previous, I think we hit a home run!"

SPOHN RANCH PROJECT PORTFOLIO



Bayonne's indoor skatepark "The Bridge" was a second home for many local youth, so when it sadly closed its doors in 2015 it created a void in the skateboard community. Local skate shop owner Gary Iannitelli recognized this void and approached the City with a request for a modern concrete skatepark. Bayonne Major Jimmy Davis answered the call and became a champion for the cause. "These are our youth, and if this is what they like doing, we owe it to them to give them what they need to enjoy themselves," Davis said.

Davis then turned to Spohn Ranch as the City's professional skatepark designer and builder. After collaborating with Iannitelli and other local skateboarders on the skatepark design, our construction team crafted the skatepark's concrete walls and slopes on-budget and ahead of schedule. "This is state-of-the-art, brand new and for the skating community. Bayonne is on the map," said Third Ward Councilman Gary La Pelusa at the grand opening.

BAYONNE, NEW JERSEY

COLLINS PARK SKATEPARK
7,000 SQ. FT. - DESIGN/BUILD - 2016

SPOHN RANCH PROJECT PORTFOLIO

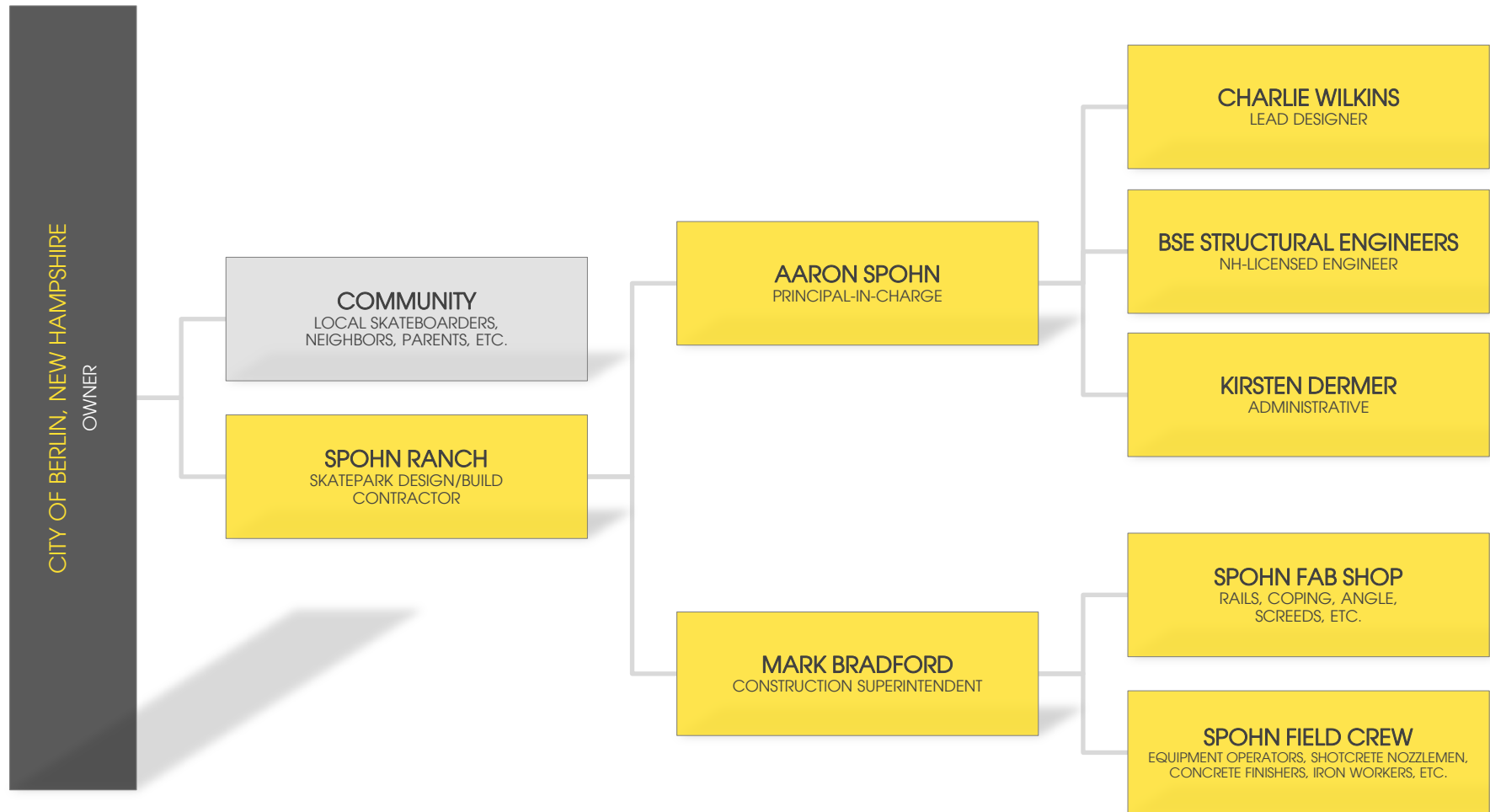


Our work, which included design, steel fabrication, drainage, earthwork and concrete, would not have been possible without the pioneering efforts of a local group of skateboarders who transformed a concrete slab at South Branch Park into a DIY skatepark. Their work caught the eye of County and Town officials who recognized the value of skateparks and subsequently agreed to invest in a professionally-built facility. The skatepark features a bowl with elevations ranging from 4-7', a mini-ramp, street staples like stairs and rails, and some creative elements to maintain continuous flow.

The existing slab was dead flat and suffered from standing water, so we cut channels into the concrete that connected to the bowl's drainage system and ultimately discharged into a bioretention area at the bottom of the hill. The site was the former home of an apple butter factory, so we're also paying tribute to local history with an ornamental steel apple at the skatepark's entrance.

SYKESVILLE, MARYLAND

SOUTH BRANCH PARK SKATEPARK
13,000 SQ. FT. - DESIGN/BUILD - 2016



AARON SPOHN

FOUNDER
& PRESIDENT

SKILLS/EXPERTISE:

SKATEPARK DESIGN /BUILD
CARPENTRY | CONCRETE
PUBLIC SPEAKING
MASTER-PLANNING | ASTM
SKATEPARK OPERATIONS
GOVERNMENT CONTRACTING
EVENT PRODUCTION



PROJECT ROLE:

Principal-in-Charge

EDUCATION:

School of
Hard Knocks

EXPERIENCE:

40+ years skateboarding
25+ years in skatepark industry

AFFILIATIONS:

National Recreation & Park Association
Florida Recreation & Park Association

BACKGROUND:

Aaron is the embodiment of the entrepreneurial spirit. When he used a carpentry background to start Spohn Ranch in the early '90's, he had no back-up plan – he put everything he had behind his passion for action sports. That passion culminated in a backyard half-pipe that not only gave birth to a community, but eventually an award-winning skatepark design/build firm.

After Aaron helped launch skateparks into the mainstream when he partnered with ESPN to develop the X-Games, Spohn Ranch's backyard roots spread globally in the form of hundreds of cutting-edge creations.

From permanent skateable landscapes to innovative installations for high-profile events, Aaron and Spohn Ranch have played an invaluable role in the exponential growth and development of action sports. Hailed by insiders as a pioneer of the modern municipal skatepark, Aaron has also spent considerable effort promoting the industry as a whole and sharing his extensive knowledge – including educational sessions at ASLA, NRPA and various states park/rec conferences.

CHARLIE WILKINS

SKATEPARK DESIGNER

SKILLS/EXPERTISE:

SKATEPARK DESIGN | AUTOCAD
SITE ANALYSIS | CONCRETE
GRADING & DRAINAGE | SCHEDULING
COMMUNITY ENGAGEMENT
FUNDRAISING | COST ESTIMATING
GOVERNMENT CONTRACTING
PROJECT MANAGEMENT



PROJECT ROLE:

Lead Designer
& Draftsman

EDUCATION:

School of
Hard Knocks

EXPERIENCE:

25+ years skateboarding
10+ years in skatepark industry

ACCREDITATIONS:

World Cup Skateboarding
World of Concrete

BACKGROUND:

Born and raised in Massachusetts, Charlie became a professional skateboarder in 1996 and helped pioneer the Boston skateboarding scene. After making the transition to the West Coast in 2011, Charlie connected with Spohn Ranch through our event work for the Mountain Dew Tour. He had honed his AutoCAD skills as Alli Sports & NBC's lead designer since the Dew Tour's inception in 2005 – a role in which he designed dozens of world-class event courses for our industry's premiere athletes. Since joining Spohn Ranch, Charlie has developed an intimate understanding of municipal standards and designed 50+ concrete skateparks for municipalities across 25+ states.

HIGHLIGHTED PROJECT LIST:

Keene Skatepark – Keene, NH
Martha's Vineyard Skatepark – Martha's Vineyard, MA
Cape May County Skatepark – Ocean City, NJ

North Adams Skatepark – North Adams, MA
Jackson Playground Skatepark – Gardner, MA
Niagara Falls Skatepark – Niagara Falls, NY

MARK BRADFORD

VP OF SKATEPARK
CONSTRUCTION



SKILLS/EXPERTISE:

LICENSED GENERAL CONTRACTOR
ACI-CERTIFIED SHOTCRETE NOZZLEMAN
CONCRETE | GRADING & DRAINAGE
HEAVY EQUIPMENT & MACHINERY
METAL FABRICATION | CARPENTRY
ELECTRICAL | LANDSCAPING
COST ESTIMATING | LOGISTICS
GOVERNMENT CONTRACTING | OSHA

PROJECT ROLE:

Construction
Superintendent

EDUCATION:

School of
Hard Knocks

EXPERIENCE:

25+ years skateboarding
20+ years in skatepark industry

AFILIATIONS:

American Concrete Institute
American Shotcrete Association

BACKGROUND:

In the field of professional action sports construction, Mark is the most respected and in-demand construction foreman. He has spent his life eating and breathing the world of specialty construction for wheeled sports, developing an unparalleled breadth of experience. As the primary leader for all of Spohn Ranch's major builds, Mark is often on the road over 300 days per year. He has completed projects in 11 countries, including Japan, Brazil and Guantanamo Bay, Cuba. As Co-Owner, Mark has the authority and responsibility to make sure that every park is perfect. He calls the shots and holds both sub-contractors and our veteran crew to his industry-defining standards. He is Spohn Ranch's "Superman".

HIGHLIGHTED PROJECT LIST:

Niagara Falls Skatepark – Niagara Falls, NY
North Adams Skatepark – North Adams, MA
Cape May County Skatepark – Ocean City, NJ

Cooper Park Skatepark – Brooklyn, NY
Jackson Playground Skatepark – Gardner, MA
Collins Park Skatepark – Bayonne, NJ

KIRSTEN DERMER

CEO
& CFO



SKILLS/EXPERTISE:

GOVERNMENT CONTRACTING
INTERSTATE COMMERCE | OSHA
INSURANCE | BONDING
CERTIFIED PAYROLL | INVOICING
LICENSURE | HUMAN RESOURCES
SKATEPARK OPERATIONS
EVENT PRODUCTION | PERMITTING

PROJECT ROLE:

Administrative

EDUCATION:

Bachelor of Science, University
of California Los Angeles

EXPERIENCE:

20+ years in
skatepark industry

AFFILIATIONS:

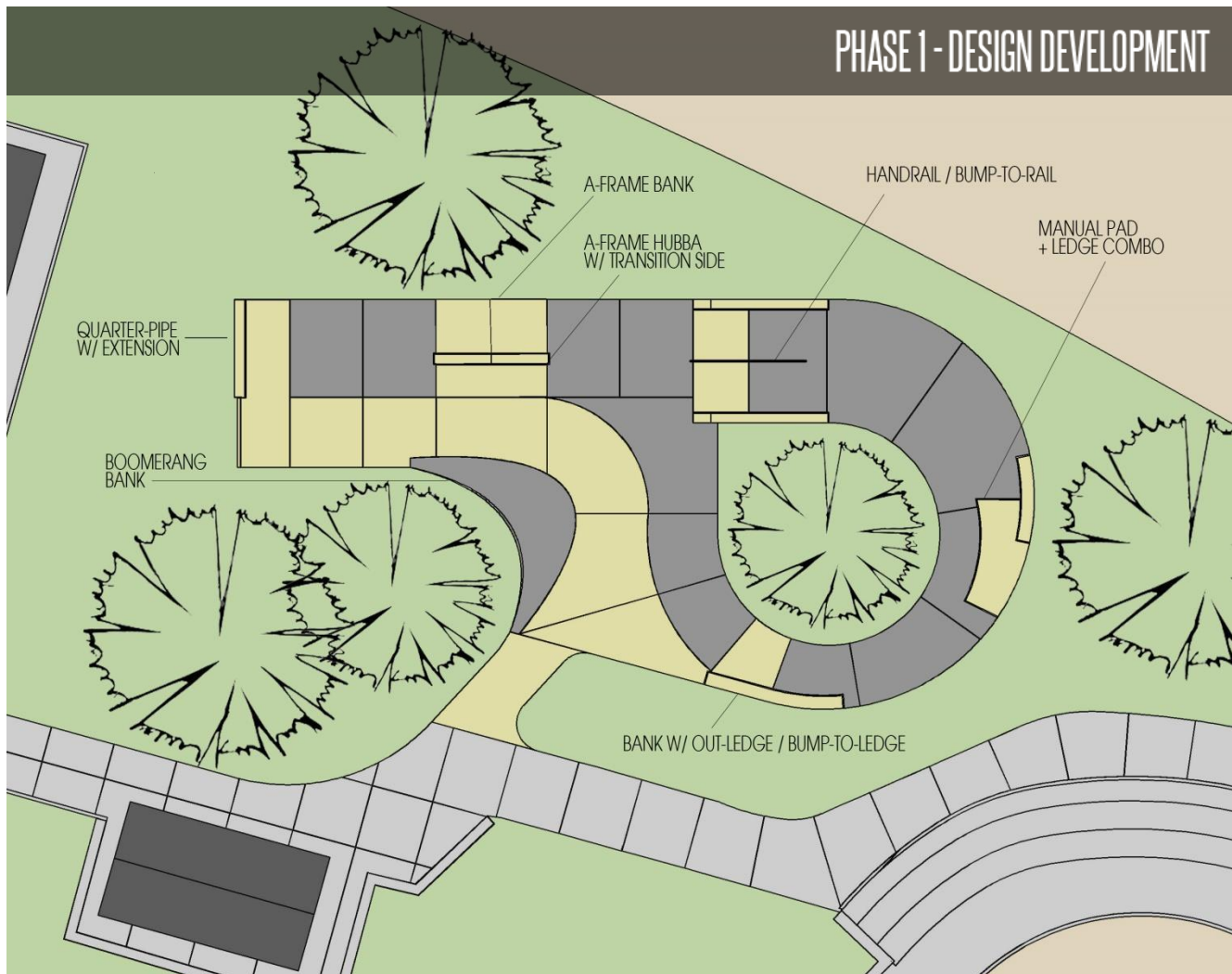
Entrepreneurs Organization
(Los Angeles Chapter)

BACKGROUND:

Kirsten is Los Angeles born and raised. While attending Venice High in the early '90s she and her brother Mark befriended their new neighbor Aaron Spohn, joining him in his relentless pursuit of skating and building ramps at his house.

It wasn't long before that house transformed into a community dubbed "Spohn Ranch". And with innate ambition and drive, it wasn't long before Kirsten transformed from one of Aaron's first employees into the CEO/CFO that would help Spohn Ranch evolve from a small family business into an award-winning, nation-wide design/build firm. The counterweight to Aaron's free-spirit, Kirsten steered the ship through good times and bad, always keeping the company on course for success. Kirsten is truly the glue that holds the company together.

Intimately involved in the action sports industry for 20+ years, the breadth of Kirsten's experience is vast. In addition to earning a bachelor's degree in environmental science from UCLA, she has developed expertise in every facet of skatepark design, construction and operations – with a focus on executing all financial, legal and administrative matters.



Task 1.1 Project Kick-Off Meeting – Spohn Ranch and the City will be introduced to one another via an in-person meeting. We will review the project goals, schedule and points of coordination. We will compile and distribute a contact sheet with contact information for all personnel who will be involved with the project.

Task 1.1 Deliverable:

- Contact Sheet (PDF)
- Kick-Off Meeting Minutes (PDF)

Task 1.2 Site Walkthrough & Analysis – Spohn Ranch will lead a site walkthrough with the City to review existing conditions and discuss opportunities/constraints. We'll record detailed notes and photograph/videotape the sites using a DJI Phantom Quadcopter. The Quadcopter captures site overviews that a conventional camera can't. These unique angles prove extremely valuable during the site analysis process, as well as during the planning of construction logistics.

Task 1.2 Deliverable:

- Site Analysis Report (PDF)
- Quadcopter Aerial Photos (JPEG)

Task 1.3 Information Gathering & Review – During the Project Kick-Off Meeting, Spohn Ranch and the City will take stock of existing site data, studies and any other information pertinent to the project and project site. We will review existing information and work with the City to collect additional information as necessary. The site information typically required to begin design work is as follows:

- Site survey in AutoCAD format indicating spot elevations, topography, benchmark and/or control point locations, drain inlets and their invert elevations, location of existing structures/features such as trees, asphalt/concrete pathways, walls, curbs, light poles, sign posts, fire hydrants, manhole covers, fences, gates, irrigation system components, visible utilities, known buried utilities, known easements, etc.
- Geotechnical report summarizing sub-surface conditions. Report should discuss water table depth, soil composition and provide recommendations for site preparation, fill material and concrete construction.
- Any master plan design work or future improvements planned for the site
- Any local or state design requirements such as a stormwater management code, etc.

We hold a strong belief that a thorough analysis of the site conditions at the beginning of the project is vital to a successful end result. Developing an in-depth understanding of our canvas ensures responsible design work and helps us avoid surprises down the road that cost both time and money.

Task 1.4 Public Design Workshop– Spohn Ranch will host a public meeting to give a “Skateparks 101” presentation and gather design input from the community. A typical workshop lasts 2-3 hours and breaks down as follows:

- 6:00 – 6:30 Project & Spohn Ranch Introduction
- 6:30 – 6:45 Skatepark Evolution & Typology
- 6:45 – 7:00 Analysis of Regional Skateparks – Pros/Cons
- 7:00 – 8:00 User Input
 - User Input Surveys
 - Feature/Terrain Ranking
 - Sketching & Conceptual Design Review

Task 1.4 Deliverable:

- Workshop Flyer (JPEG)
- Workshop Minutes (PDF)



Task 1.5 Facebook Group – Spohn Ranch will create a Facebook group specific to receiving skatepark design input from local skateboarders and stakeholders. In order to communicate with the end-users of your skatepark project, you must connect with them on their level – utilizing tools they are already using on a consistent basis. With the most traffic of any website in the world and over one billion active users, Facebook opens the door for direct and continuous interaction with your community's skateboarders and other stakeholders.

- Meeting reminders
- Polls
- Design discussion
- Construction updates
- Event information – grand opening, contests and special events throughout the life of the park



SHARE YOUR VOICE AT THE
TEMECULA SKATEPARK DESIGN WORKSHOP
THURSDAY AUG 28TH 6:00 PM

OPEN TO THE PUBLIC WE WANT YOUR OPINION
TELL US WHAT YOU'D LIKE TO SEE AT THE TSP!
SKATEBOARD, SCOOTER, AND BMX RIDERS ALL WELCOME

TEMECULA CRC (MULTIPURPOSE ROOM)
30875 RANCHO VISTA ROAD
*** REFRESHMENTS PROVIDED**
CALL 951-695-1409 FOR QUESTIONS

SPOHN RANCH SKATEPARKS
Temecula
The Heart of Southern California Wine Country

Task 1.6 75% Design Development – Incorporating feedback from the Project Kick-Off Meeting, Site Walkthrough and Public Design Workshop, Spohn Ranch will refine the conceptual design. The revised conceptual design will address footprint, access, spacing, sections of terrain and elevations, but not detail specific dimensions of every obstacle.

Task 1.6 Deliverable

- 3D Renderings Produced in 3D Studio Max (JPEG)
- Labeled & Dimensioned 2D Site Plan (PDF)
- Material Takeoff & Construction Cost Estimate (Excel)
- 2D Base File (AutoCAD)

Task 1.7 75% Design Development Review Meeting – Spohn Ranch will lead a teleconference/webinar to present the revised conceptual design and solicit feedback.

Task 1.7 Deliverable

- Meeting Minutes (PDF)

Task 1.8 100% Design Development – Incorporating feedback from Facebook and the 75% Design Development Review Meeting, Spohn Ranch will refine the conceptual design until consensus and 100% Design Development is reached.

Task 1.8 Deliverable

- 3D Renderings Produced in 3D Studio Max (JPEG)
- Labeled & Dimensioned 2D Site Plan (PDF)
- Material Takeoff & Construction Cost Estimate (Excel)
- 2D Base File (AutoCAD)

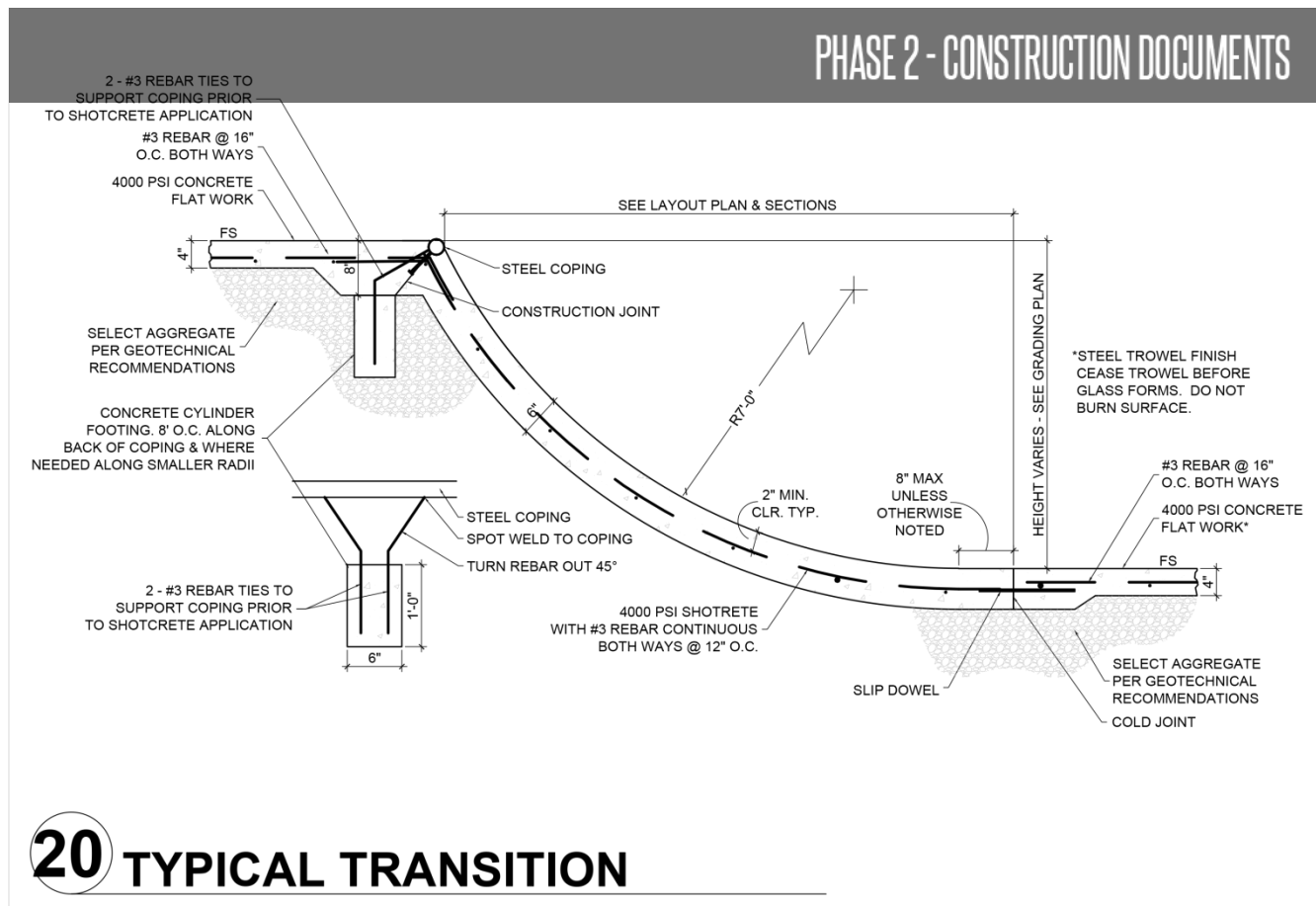


**SMART SKATEPARK DESIGN BALANCES THE FULL SPECTRUM
OF TERRAIN STYLES AND EXPERIENCE LEVELS**

As part of our cost estimating process, we will guide the City through a process of identifying opportunities for in-kind material/service donations from the community or non-specialty work that can be executed by City resources. Tapping into community or City resources can stretch the budget and result in more features and square footage.

A breakdown of material/service donation opportunities from a previous project is shown below.

ITEM	SPECIFICATIONS	QUANTITY
Temporary Construction Fence	6' Chain Link or 4' Snow Fence	550 Linear Feet
Temporary Dumpster	10-20 Yard	6 Weeks
Temporary Restroom	Single Unit	6 Weeks
Forming Lumber	Plywood 4' x 8' x ½"	20 Sheets
Forming Lumber	Plywood 4' x 8' x ¾"	20 Sheets
Forming Lumber	2" x 4" x 10'	100
Forming Lumber	2" x 6" x 10'	100
Forming Screws	25 lb. Box of 3" #9 Torx T25 Deck Screws	2 Boxes
Rebar	20' sticks (#3, Grade 60)	750 Sticks
Skid steer	CAT 257B or Equivalent (Smooth Edge Bucket & Tracks)	3 Weeks
Mini-excavator	CAT 305 or Equivalent (Toothed Bucket)	2 Weeks
Roller	Smooth Drum (Minimum 4' Wide Drum)	2 Weeks
Line Pump	Minimum 30 YD/Hour Swing Tube	3 weeks
Compressor	Minimum 185 CF/Minute	3 weeks
Concrete	7.5 Sack, 4,000 PSI	115 Cubic Yards
Lodging	3 Rooms (2 Beds/Room)	6 Weeks
Staking	Stake Corners & Control Points	1 Day
Clearing & Demo	Expose Clean Sub-Grade (+ Haul Spoils)	8,500 Square Feet
Fill Material	Structural, Clean	500 Cubic Yards
Aggregate Base	¾" Crushed Road Base	100 Cubic Yards
Drain Line	SDR 35, 6" Diameter (+ Miscellaneous Fittings/Supplies)	100 LF
Rough Grading	+/- .1' of Specified Sub-Grade Elevations	8,500 Square Feet
Sealant	Sikaflex Joint Sealant (20 oz. Tubes)	3 Cases
Hydroseeding	Local Standards	5,000 Square Feet
Soil Borings & Geotechnical Report	10-20' Depth	2 Borings
Topographic Survey	Spot Elevations, Benchmark, Etc. (AutoCAD)	10,000 Square Feet



Task 2.1 Construction Documents Kick-Off Meeting – Spohn Ranch will lead a teleconference/webinar with the City to review 100% Design Development, special requirements and points of coordination – ensuring everyone is on the same page prior to construction document work getting underway.

Task 2.1 Deliverable:

- Meeting Minutes (PDF)

Task 2.2 80% Construction Documents – Spohn Ranch will prepare a 80% Construction Documents submittal, beginning to detail the site improvements.

Task 2.2 Deliverable: 80% Construction Documents (PDF & 2D AutoCAD)

- | | |
|-------------------|--|
| • Cover Sheet | • Jointing Plan |
| • 3D Perspective | • Grading & Drainage Plan |
| • Site Plan | • Landscaping Plan |
| • Demolition Plan | • Sections |
| • Materials Plan | • Details |
| • Steel Plan | • Specifications – CSI MasterFormat 2014 (PDF) |
| • Layout Plan | • Construction Cost Estimate (PDF) |

Task 2.3 80% Construction Documents Review Meeting – The City will review the 80% Construction Documents submittal and prepare redline comments. Spohn Ranch and the City will discuss via teleconference/webinar the redline comments and identify actions needed to address the comments.

Task 2.3 Deliverable:

- Meeting Minutes (PDF)



THOROUGH BLUEPRINTS >
EFFICIENT BUILD



Task 2.4 100% Construction Documents – Spohn Ranch will incorporate feedback from 80% Construction Documents Review Meeting and finalize the 100% Construction Documents submittal.

Task 2.4 Deliverable:

- 100% Construction Documents sealed by NH-Licensed Professional Engineer (PDF & 2D AutoCAD)
- Specifications (PDF)
- Construction Cost Estimate (PDF)

Task 2.5 Permits – Upon approved 100% Construction Documents, Spohn Ranch will collaborate with the City to obtain the permits required for construction.

Task 2.5 Deliverable:

- Permits (PDF)

PHASE 3 - CONSTRUCTION



Task 3.1 Pre-Construction Meeting – Spohn Ranch’s Construction Superintendent, Mark Bradford, will meet with the City on-site to review the scope of work, schedule and points of coordination.

Mark will also lead weekly on-site meetings with the City to answer questions and provide progress updates.

Task 3.1 Deliverable:

- Meeting Minutes (PDF)
- Updated Construction Schedule (PDF)

Task 3.2 Steel Fabrication – Upon 100% Construction Documents and approved permits, certified welders and iron workers will begin fabricating the steel coping, grind rails and edge protection at Spohn Ranch’s 25,000 square foot facility in City of Industry, California. The steel is then hot-dip galvanized for superior interior/exterior corrosion resistance.

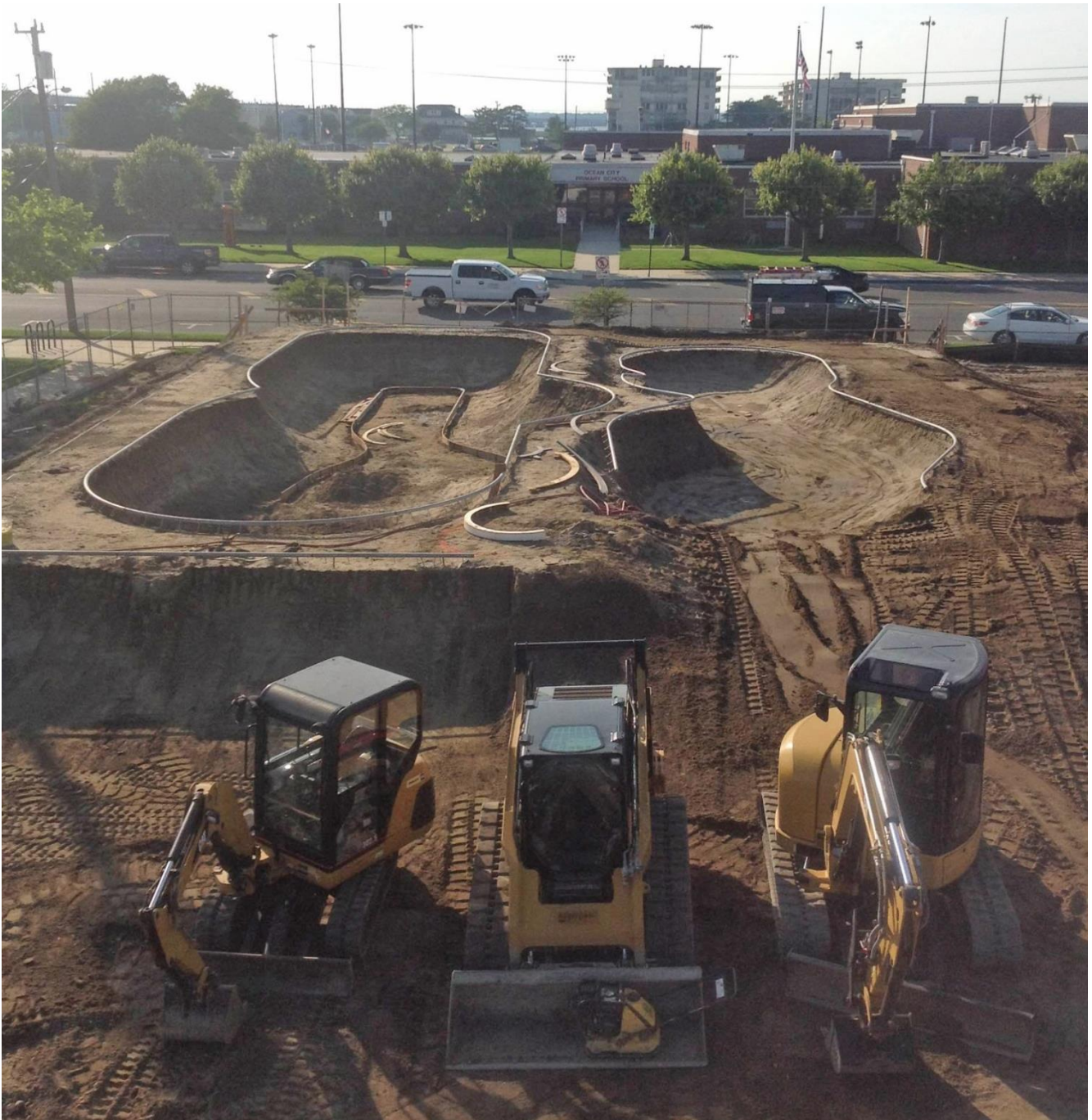
Spohn Ranch is the only skatepark builder that uses state-of-the-art CNC (Computer Numerical Control) technology to cut all screeds and framing lumber, ensuring the exact radii, angles and dimensions specified in the construction documents.

Task 3.3 Site Preparation – Mark and Spohn Ranch’s veteran construction team will prepare the site for construction, with the first step being the establishment of a safe and organized job site.

- Temporary security fencing
- Temporary erosion-control measures (if required)
- Temporary dumpster & concrete wash-out
- Temporary restroom
- Stabilized construction entrance
- Temporary water & power hook-up
- Utility locates
- Site staking & layout



GIVE ME SIX HOURS TO CHOP DOWN A TREE AND I WILL SPEND THE FIRST FOUR SHARPENING THE AXE - ABRAHAM LINCOLN



Task 3.4 Earthwork & Drainage – With the construction site established, Mark will lead the team as they clear the site, install the drainage system and contour the terrain.

- Clearing and grubbing
- Moisture-conditioning and compaction
- Excavation
- Rough and fine grading
- Import/export fill material
- Import base course
- Trenching
- Pipeline installation

Task 3.5 Forming, Rebar & Steel Installation – With the earthwork scope substantially complete, Mark will lead the team as they prepare the skateable terrain for concrete by executing the installation of forms, reinforcing steel and steel coping, grind rails and edge protection.



SPOHN RANCH HAS MASTERED A RANGE OF TECHNIQUES SPECIFIC TO BUILDING THE HIGHEST-QUALITY SKATEABLE TERRAIN





**Task 3.6 Place
Shotcrete & Concrete
for Skate**

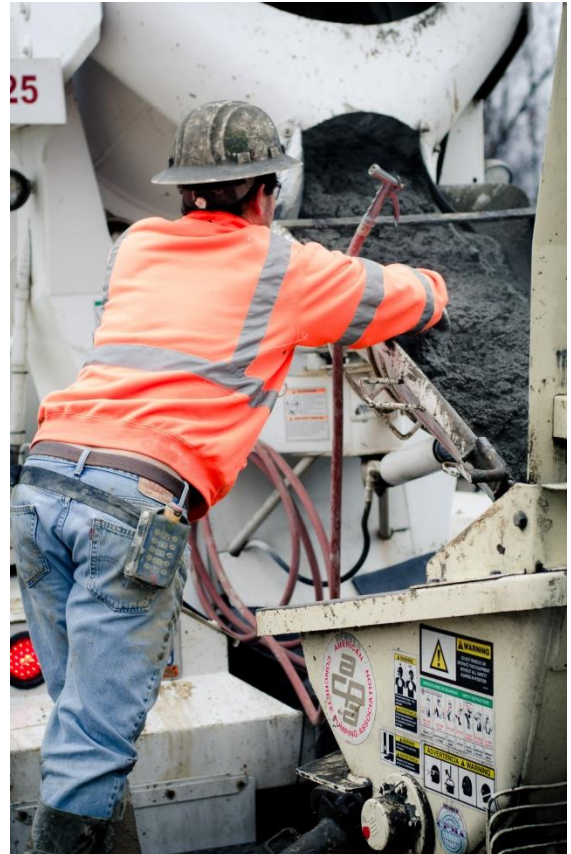
Elements/Terrain – Mark Bradford, an ACI-certified shotcrete nozzleman, will lead our team in shooting and placing concrete to bring the various sections of terrain to life. Our specialty concrete mix design will be refined as we develop a better understanding of the site's soil conditions and collaborate with a local ready-mixed concrete plant.

Task 3.7 Form, Reinforce & Place Concrete Flatwork – In an effort to prevent users from riding the skatepark before it is complete and while the site is still an active construction zone, we strategically schedule the concrete flatwork as the final pours. Mark will lead the team in forming, rebar installation and the placing and finishing of concrete.

Special care is given at this stage, as there is a delicate balance between the riding surface being too gritty or too slick. 20+ years of skatepark construction experience has helped us perfect that balance.



ATTENTION TO DETAIL >
SUSTAINABILITY



Task 3.8 Detail Work, Punch List & Clean-Up – After a methodical concrete curing process, Mark will lead the team in performing the final detail work including saw cuts, caulking, power-washing and landscaping.

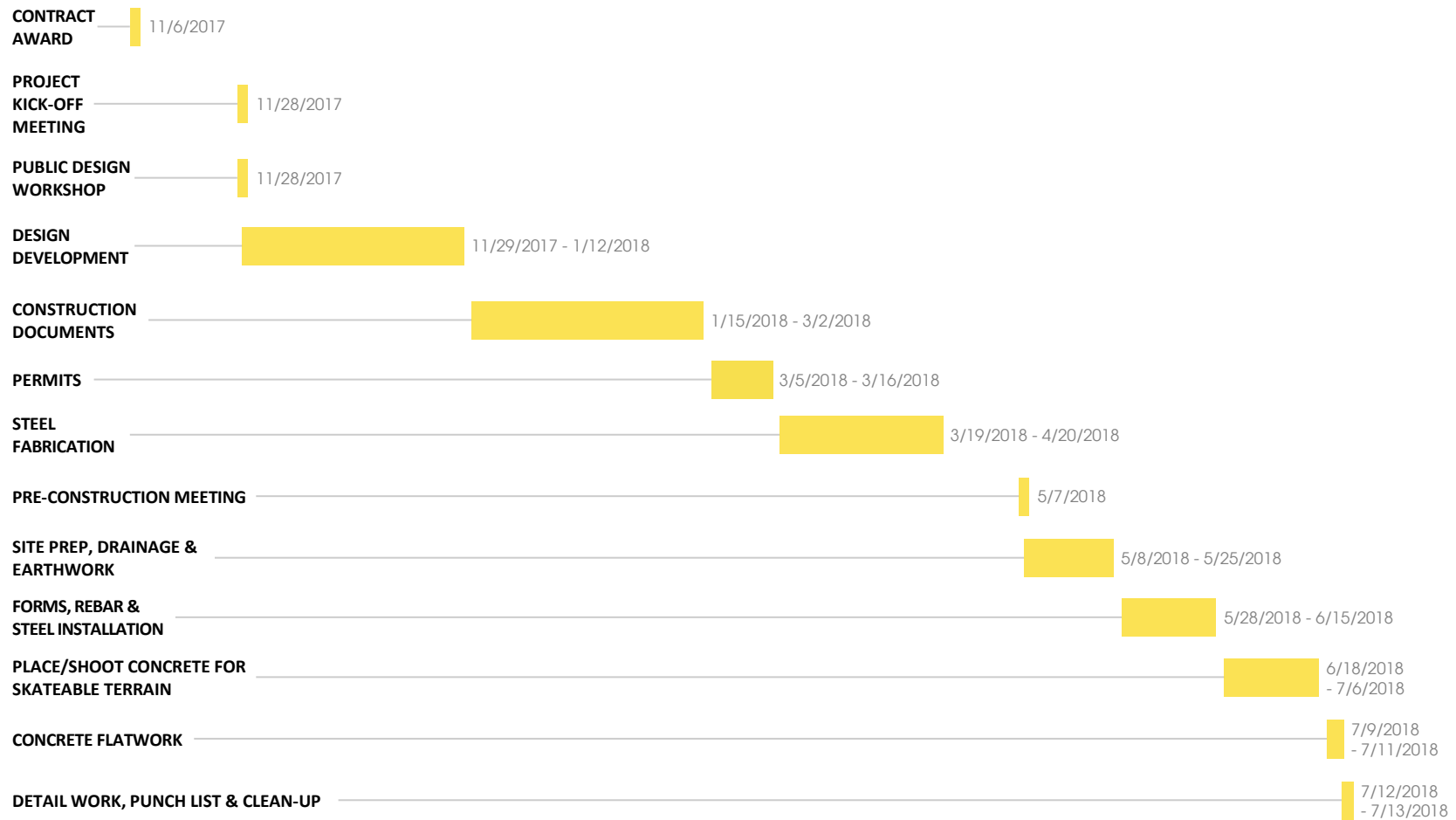
Upon substantial completion, Mark will conduct a walkthrough with the City to identify any final punch list items. He will also lead an educational training session discussing maintenance programs and schedules. When the final punch list items are addressed, we will clean up the site and de-mobilize equipment, tools and crew.

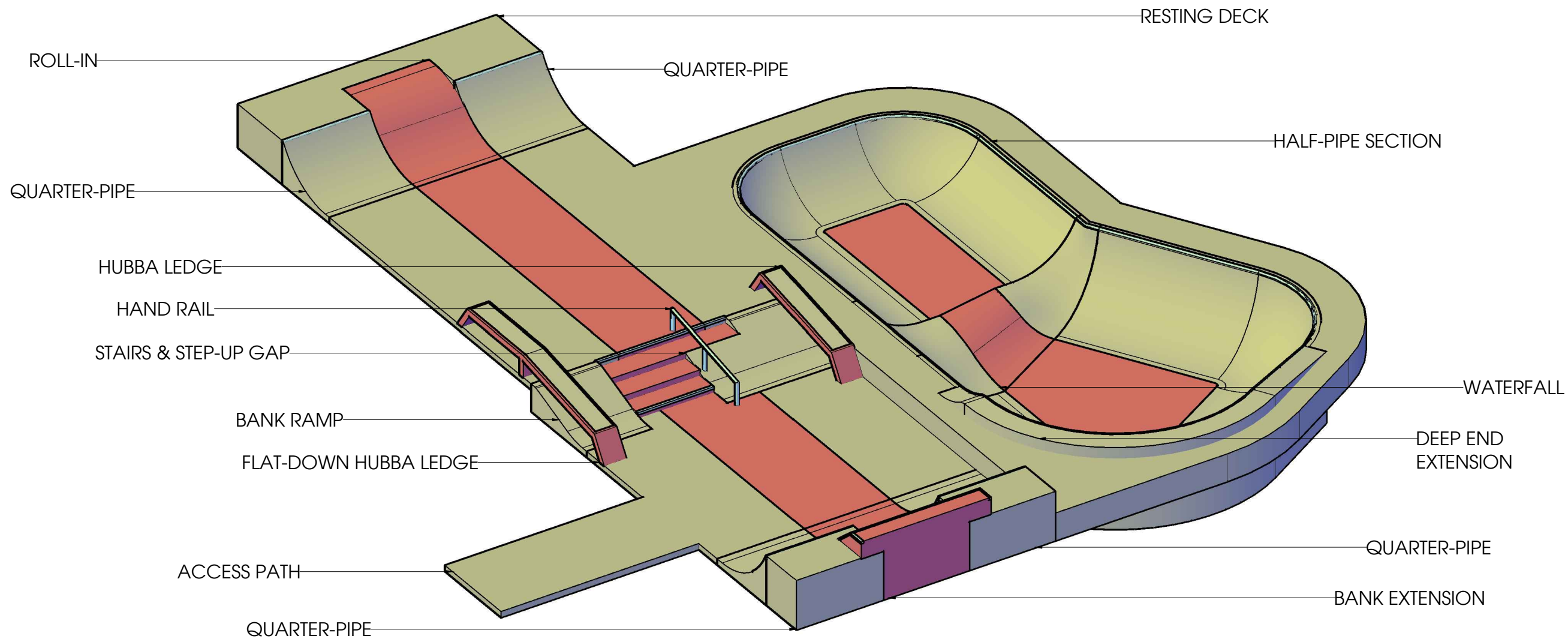
Task 3.8 Deliverable:

- Acceptance Letter (PDF)
- Warranty (PDF)
- Owner's Manual (PDF)
- As-Built Drawings (AutoCAD & PDF)



SKATEPARK DESIGN/BUILD – BERLIN, NEW HAMPSHIRE



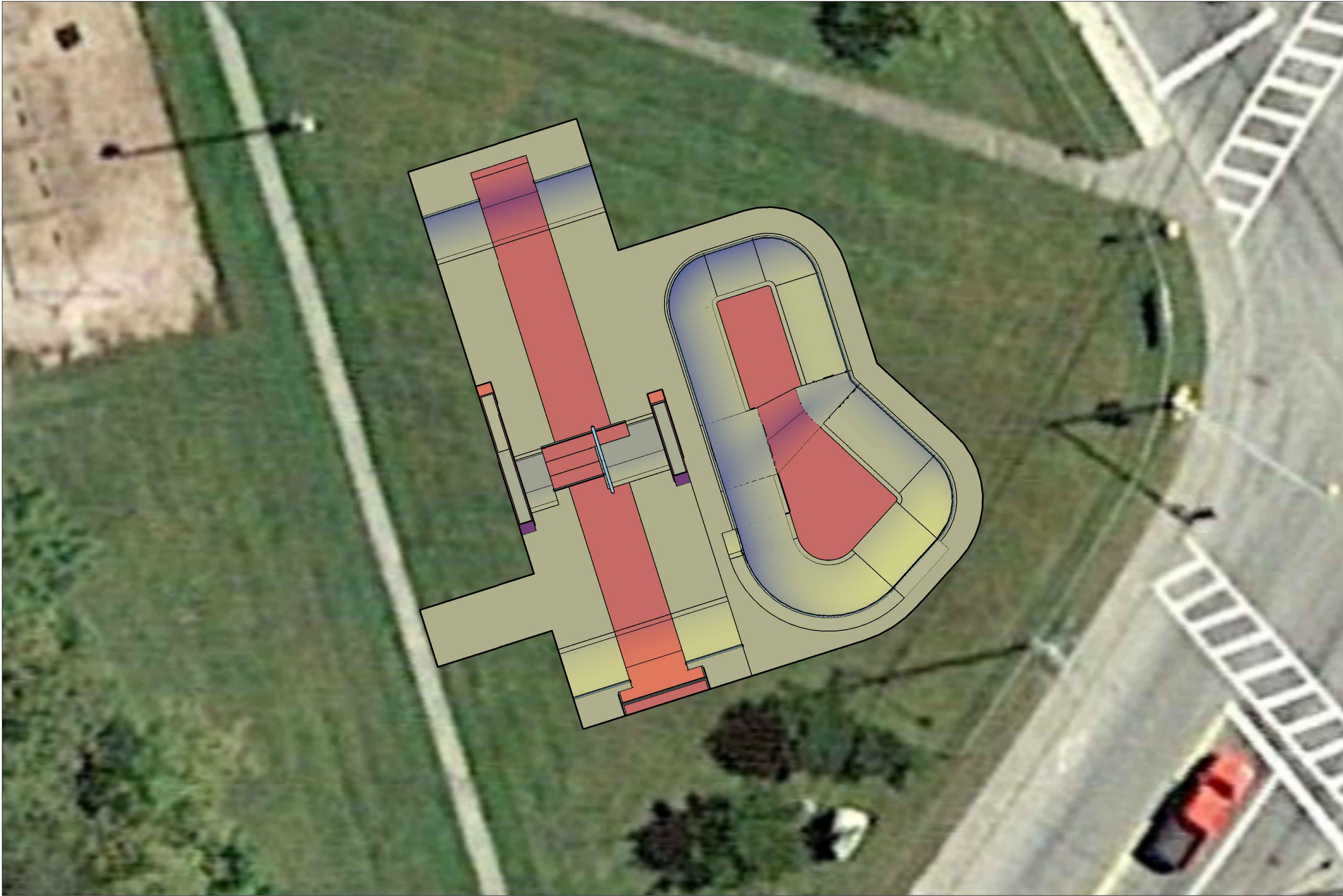


The use of these plans shall be restricted to the original site for which they were prepared, and publication thereof is limited to such use. Reproduction, publication or use of these plans for any other purpose without the written consent of Spohn Ranch, Inc. is prohibited. Title to these plans and the design herein shall remain with Spohn Ranch, Inc. and no other use of the plans shall constitute acceptance of these restrictions. Copyright © 2017 Spohn Ranch, Inc.

PROJECT TITLE
COMMUNITY FIELD SKATEPARK - BERLIN, NH

SHEET TITLE
CONCEPTUAL DESIGN 10.13.17

**SPOHN RANCH
SKATE PARKS**
DESIGN. BUILD. COME TOGETHER.
6824 S. CENTINELA AVE. - LOS ANGELES, CA 90230
OFFICE (626) 330-8803 - FAX (626) 330-5503



The use of these plans shall be restricted to the original site for which they were prepared, and publication thereof is limited to such use. Reproduction, publication or use of these plans for any other purpose, in whole or part, without express written consent from Spohn Ranch, Inc. is prohibited. Title to these plans and designs belongs to Spohn Ranch, Inc. and no portion of the plans shall be used or any other use of the plans shall constitute acceptance of these restrictions. Copyright © 2017 Spohn Ranch, Inc.

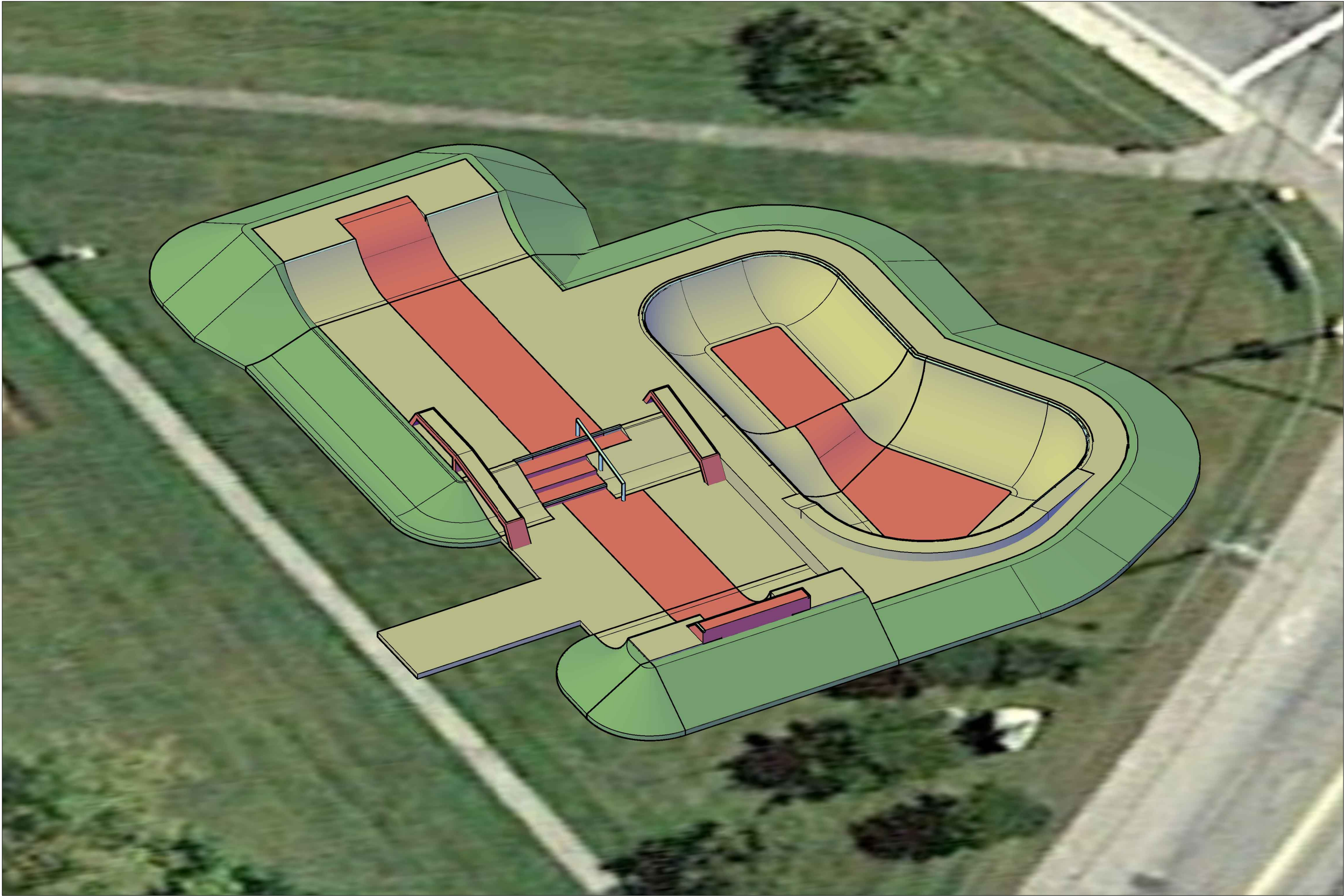
PROJECT TITLE
COMMUNITY FIELD SKATEPARK - BERLIN, NH

SHEET TITLE
CONCEPTUAL DESIGN 10.13.17

SHEET NO.
2
OF 4

**SPOHN RANCH
SKATE PARKS**
DESIGN. BUILD. COME TOGETHER.
6824 S. CENTINELA AVE. - LOS ANGELES, CA 90230
OFFICE (626) 330-8603 - FAX (626) 330-5503





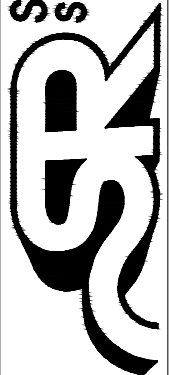
The use of these plans shall be restricted to the original site for which they were prepared, and publication thereof is limited to such use. Reproduction, publication or distribution of these plans by any means, in whole or part, without express written consent from Spohn Ranch, Inc. is prohibited. Title to these plans and designs belongs to Spohn Ranch, Inc. and no portion of the plans may be used for any other use of the project without the written acceptance of these restrictions. Copyright © 2017 Spohn Ranch, Inc.

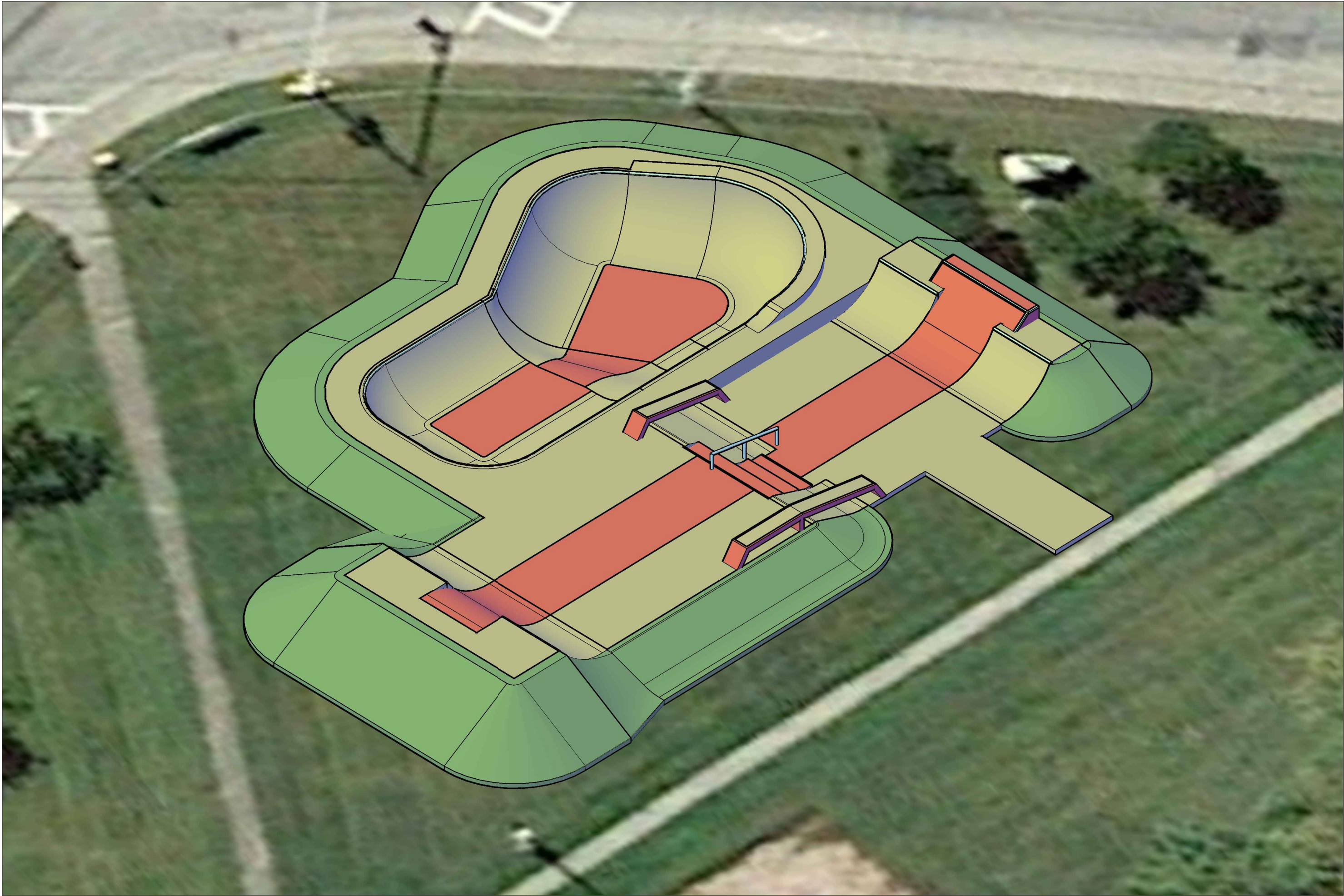
PROJECT TITLE
COMMUNITY FIELD SKATEPARK - BERLIN, NH

SHEET TITLE
CONCEPTUAL DESIGN 10.13.17

SHEET NO.
3
OF 4

**SPOHN RANCH
SKATE PARKS**
DESIGN · BUILD · COME TOGETHER.
6824 S. CENTINELA AVE. - LOS ANGELES, CA 90230
OFFICE (626) 330-8603 - FAX (626) 330-5503





The use of these plans shall be restricted to the original site for which they were prepared, and publication thereof is limited to such use. Reproduction, publication or distribution of these plans by any means, in whole or part, without express written consent from Spohn Ranch, Inc. is prohibited. Title to these plans and designs belongs to Spohn Ranch, Inc. and no portion of the plans shall be used for any other use of the project without the written acceptance of these restrictions. Copyright © 2017 Spohn Ranch, Inc.

PROJECT TITLE
COMMUNITY FIELD SKATEPARK - BERLIN, NH

SHEET TITLE
CONCEPTUAL DESIGN 10.13.17

**SPOHN RANCH
SKATE PARKS**
DESIGN. BUILD. COME TOGETHER.
6824 S. CENTINELA AVE. - LOS ANGELES, CA 90230
OFFICE (626) 330-8603 - FAX (626) 330-5503

SHEET NO.
4
OF 4



DESIGN. BUILD. COME TOGETHER.

COST ESTIMATE FOR SKATEPARK DESIGN/BUILD
COMMUNITY FIELD SKATEPARK – CITY OF BERLIN, NH
OCTOBER 13, 2017

SCOPE OF WORK – SPOHN RANCH:	ESTIMATED COST:
PUBLIC DESIGN WORKSHOP & DESIGN DEVELOPMENT	\$3,500.00
CONSTRUCTION DOCUMENTS	\$2,500.00
ENGINEERING	\$1,500.00
TOOL, EQUIPMENT & CREW MOBILIZATION	\$12,500.00
CREW LODGING	\$8,000.00
BOWL EXCAVATION	\$4,000.00
FINE GRADING	\$5,000.00
SHOTCRETE	\$45,500.00
CONCRETE BANKS	\$7,500.00
CONCRETE TURNDOWN WALLS	\$1,000.00
CONCRETE HUBBA LEDGES	\$2,500.00
CONCRETE STAIRS	\$2,000.00
CONCRETE FLATWORK	\$15,000.00
SAW-CUT CONTROL JOINTS, EXPANSION JOINTS & SEALING	\$2,000.00
HOT-DIP GALVANIZED STEEL GRIND RAIL	\$1,000.00
HOT-DIP GALVANIZED STEEL COPING	\$6,000.00
HOT-DIP GALVANIZED STEEL EDGE PROTECTION	\$3,000.00
FIELD WELDING	\$500.00
CNC-CUT SCREEDS & FORMS	\$2,000.00
TOTAL ESTIMATED COST	\$125,000.00

ADD ALTERNATE – SPOHN RANCH:	ESTIMATED COST:
INTEGRAL COLOR FOR CONCRETE	\$3,750.00

SCOPE OF WORK – BERLIN PUBLIC WORKS:	ESTIMATED COST:
TEMPORARY CONSTRUCTION FACILITIES (FENCE, RESTROOM, ETC.)	\$2,000.00
SITE STAKING & LAYOUT	\$500.00
MOVE BENCH, PLAQUE & TREE	\$500.00
REMOVE GRASS & TOPSOIL	\$3,000.00
DRAIN LINE INSTALLATION (STUB OUT FOR DRAIN BODY & GRATE INSTALL BY SPOHN RANCH)	\$2,000.00
IMPORT & PLACE FILL MATERIAL	\$5,000.00
IMPORT & PLACE BASE COURSE	\$3,000.00
COMPACTED ROUGH GRADE	\$5,000.00
SITE RESTORATION & LANDSCAPING	\$4,000.00
TOTAL ESTIMATED COST	\$25,000.00



DESIGN. BUILD. COME TOGETHER.

ASSUMPTIONS:

- Estimate is considered preliminary and can fluctuate based on results of site inspection, public design workshop, etc.
- Estimate does not include 3rd party testing fees
- Estimate does not include permit fees
- Estimate does not including prevailing wage
- Estimate does not include performance/payment bond
- Estimate does not include any work not expressly described in Spohn Ranch's scope above

TERMS & CONDITIONS:

- Acceptance of the work shall be commercially reasonable and expeditious
- Failure to object to work within a reasonable time shall constitute deemed acceptance
- Spohn shall have approval rights as to any initial project schedule, and all subsequent schedule changes
- Spohn shall accept no risk of loss outside of its direct control
- All discretion attributed to Client in any contract shall be subject to commercial reasonableness standard
- Spohn shall not indemnify Client for losses not proximately and solely caused by Spohn
- Spohn must approve any material changes in scope in writing
- All modifications, waivers, alterations to be charged against Spohn must be written and signed by Spohn's authorized representative
- Spohn shall have the right to cure any alleged default within a reasonable time
- Any liability of Spohn which relates to the sale, manufacture, delivery, resale, installation or use of any goods sold by or furnished by Spohn, whether arising out of contract, negligence, strict tort, under any warranty or otherwise, shall be limited to Spohn's choice of the following: the repair of the goods; the replacement of the goods; the cancellation of the contract, return of the goods in question to Spohn, and Spohn's refund of the purchase price
- In no event shall Spohn's liability exceed the price of the specific goods upon which the liability is based
- In addition, Spohn shall not, under any circumstances, be responsible for special, consequential, or incidental damages such as, but not limited to, damage to or loss of other property; loss of profit, revenue or reputation; loss of capital; loss of purchased or replaced goods; or claims for delays, back charges, or loss of use
- Spohn reserves the right to make any corrections as necessary to typographic errors
- In the event of any action, suit, arbitration, or other proceeding of any nature is brought in connection with the payment terms related to these Terms and Conditions, any related agreement, or Spohn's provision of goods, services, products, or to recover any of Spohn's property ("Dispute"), the prevailing party shall be entitled to recover its reasonable attorney's fees, expert-witness fees, other litigation costs and fees (e.g., deposition costs, trial preparation costs, etc.), and other costs and expenses of suit, judgment or award. Any Dispute including the determination of the scope or applicability of this agreement to arbitrate, shall be determined by arbitration in Los Angeles, California, before one arbitrator. At the option of the first to commence an arbitration, the arbitration shall be administered either by the American Arbitration Association (AAA) pursuant to its Commercial Rules or by JAMS pursuant to its Comprehensive Arbitration Rules and Procedures. Judgment on the Award may be entered in any court having jurisdiction. This clause shall not preclude parties from seeking provisional remedies in aid of arbitration from a court of appropriate jurisdiction. The arbitrator shall, in the Award, allocate costs, reasonable attorney's fees, expert-witness fees, other litigation fees and expenses including the costs of arbitration to the prevailing party in accordance with the Attorney's Fees provision. Judgment on any arbitration award may be entered by any court of competent jurisdiction.
- These Terms and Conditions are necessarily incorporated by reference into any other related agreement; Client agrees that California law shall govern the relationship between the Client and Spohn to the fullest extent of applicable law including enforcement of any part of these Terms and Conditions or any other related agreement between or among Client and Spohn.
- Each Term and/or Condition herein is severable in the event one or more provisions are unenforceable for any reason.