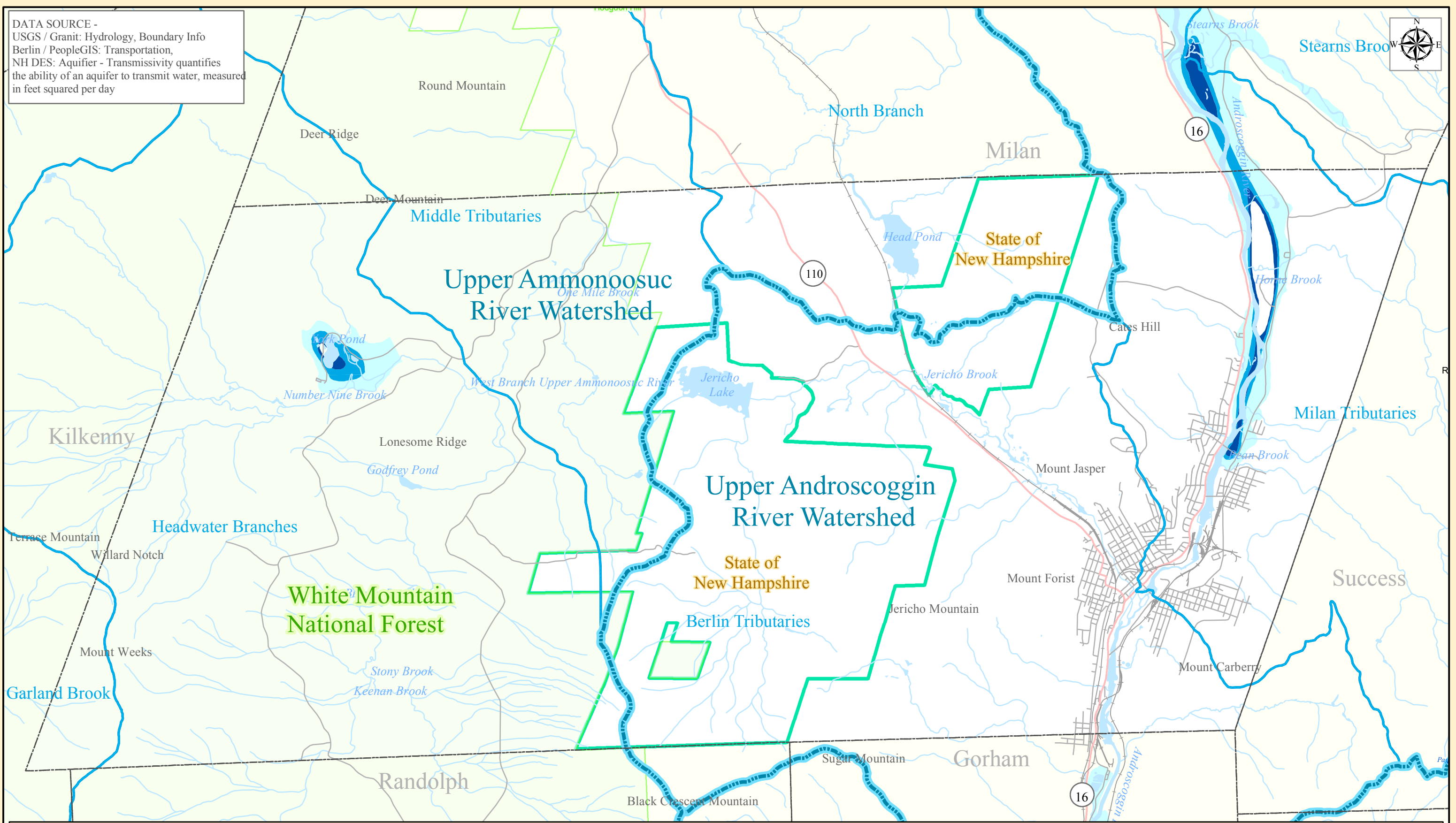


DATA SOURCE -
 USGS / Granit: Hydrology, Boundary Info
 Berlin / PeopleGIS: Transportation,
 NH DES: Aquifer - Transmissivity quantifies
 the ability of an aquifer to transmit water, measured
 in feet squared per day

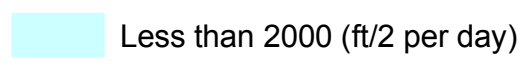



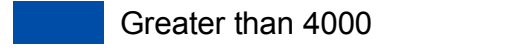


Berlin Master Plan
 Jeffrey H. Taylor & Associates
 March, 2010

City of Berlin

WATERSHEDS AND AQUIFERS



	Less than 2000 (ft ² /day)		Major Watershed (HUC 10)
	2000 - 4000		Sub Watershed (HUC 12)
	Greater than 4000		

